

WDR66 Antibody



PACO39474

Product Information

Size:

50ug

Reactivity:

Human

Source:

Rabbit

Isotype:

IgG

Applications:

ELISA, IHC

Recommended dilutions:

ELISA:1:2000-1:10000, IHC:1:20-1:200

Protein Background:**Gene ID:**

WDR66

Uniprot

Q8TBY9

Synonyms:

Cilia- and flagella-associated protein 251 (CFAP251) (WD repeat-containing protein 66), WDR66, CFAP251

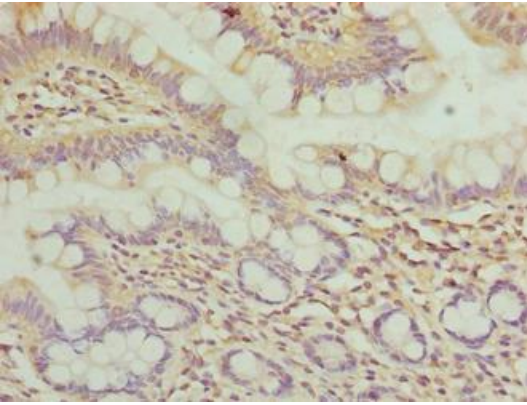
Immunogen:

Recombinant Human WD repeat-containing protein 66 protein (1-1154AA).

Storage:

Preservative: 0.03% Proclin 300. Constituents: 50% Glycerol, 0.01M PBS, PH 7.4

Product Images



Immunohistochemistry of paraffin-embedded human small intestine tissue using PACO39474 at dilution of 1:100.