

# LGALS14 Antibody



PACO39478

---

## Product Information

**Size:**

50ug

**Reactivity:**

Human

**Source:**

Rabbit

**Isotype:**

IgG

**Applications:**

ELISA, WB

**Recommended dilutions:**

ELISA:1:2000-1:10000, WB:1:500-1:5000

**Protein Background:**

Binds beta-galactoside and lactose. Strong inducer of T-cell apoptosis.

**Gene ID:**

LGALS14

**Uniprot**

Q8TCE9

**Synonyms:**

Placental protein 13-like (Charcot-Leyden crystal protein 2) (CLC2) (Galectin-14) (Gal-14), LGALS14, PPL13

**Immunogen:**

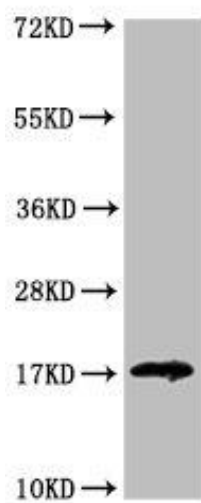
Recombinant Human Placental protein 13-like protein (31-139AA).

**Storage:**

Preservative: 0.03% Proclin 300. Constituents: 50% Glycerol, 0.01M PBS, PH 7.4

## Product Images

---



Western Blot. Positive WB detected in: HEK293 whole cell lysate. All lanes: LGALS14 antibody at 3.2 $\mu$ g/ml. Secondary. Goat polyclonal to rabbit IgG at 1/50000 dilution. Predicted band size: 17, 20 kDa. Observed band size: 17 kDa.