

PACO39482

---

## Product Information

**Size:**

50ug

**Reactivity:**

Human, Mouse

**Source:**

Rabbit

**Isotype:**

IgG

**Applications:**

ELISA, WB, IHC, IF

**Recommended dilutions:**

ELISA:1:2000-1:10000, WB:1:500-1:5000,  
IHC:1:20-1:200, IF:1:50-1:200

**Protein Background:**

Substrate-recognition component of the SCF (SKP1-CUL1-F-box protein)-type E3 ubiquitin ligase complex. May play a role in accumulation of expanded polyglutamine (polyQ) protein huntingtin (HTT).

**Gene ID:**

FBXO25

**Uniprot**

Q8TCJ0

**Synonyms:**

F-box only protein 25, FBXO25, FBX25

**Immunogen:**

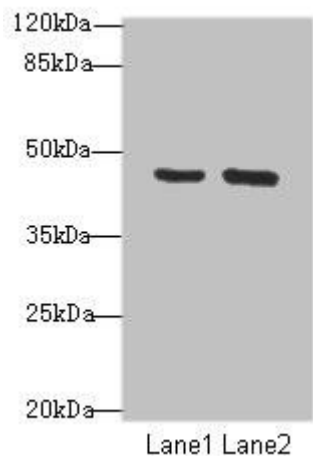
Recombinant Human F-box only protein 25 protein (1-291AA).

**Storage:**

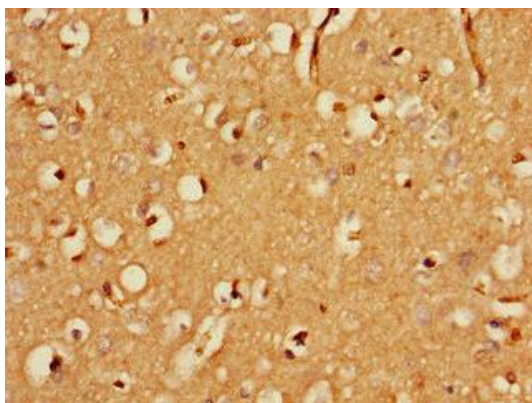
Preservative: 0.03% Proclin 300. Constituents: 50% Glycerol, 0.01M PBS, PH 7.4

## Product Images

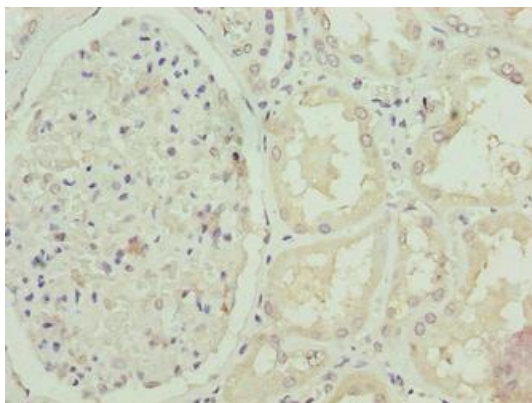
---



Western blot. All lanes: FBXO25 antibody at 3 $\mu$ g/ml. Lane 1: Mouse liver tissue. Lane 2: Mouse kidney tissue. Secondary: Goat polyclonal to rabbit IgG at 1/10000 dilution. Predicted band size: 44, 43, 35 kDa. Observed band size: 44 kDa.



Immunohistochemistry of paraffin-embedded human brain tissue using PACO39482 at dilution of 1:100.



Immunohistochemistry of paraffin-embedded human kidney tissue using PACO39482 at dilution of 1:100.