

# BTN2A2 Antibody



PACO39502

---

## Product Information

**Size:**

50ug

**Reactivity:**

Human, Mouse

**Source:**

Rabbit

**Isotype:**

IgG

**Applications:**

ELISA, WB, IHC

**Recommended dilutions:**

ELISA:1:2000-1:10000, WB:1:500-1:2000,  
IHC:1:20-1:200

**Protein Background:**

Inhibits the proliferation of CD4 and CD8 T-cells activated by anti-CD3 antibodies, T-cell metabolism and IL2 and IFNG secretion.

**Gene ID:**

BTN2A2

**Uniprot**

Q8WVV5

**Synonyms:**

Butyrophilin subfamily 2 member A2, BTN2A2, BT2.2 BTF2

**Immunogen:**

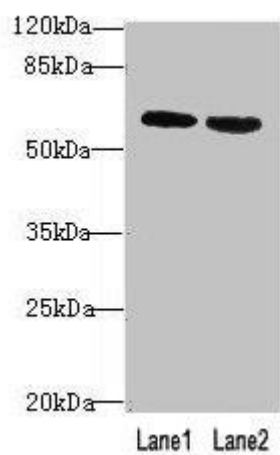
Recombinant Human Butyrophilin subfamily 2 member A2 protein (33-262AA).

**Storage:**

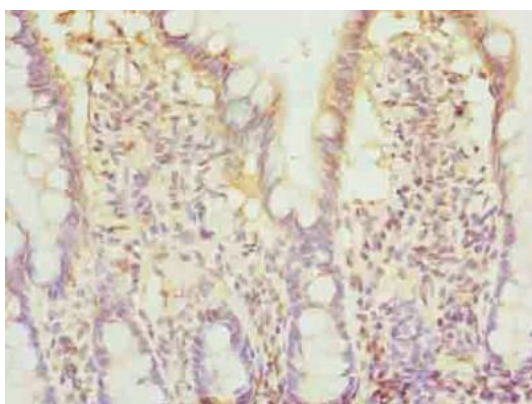
Preservative: 0.03% Proclin 300. Constituents: 50% Glycerol, 0.01M PBS, PH 7.4

## Product Images

---



Western blot. All lanes: BTN2A2 antibody at 10 $\mu$ g/ml. Lane 1: MCF-7 whole cell lysate. Lane 2: NIH/3T3 whole cell lysate. Secondary. Goat polyclonal to rabbit IgG at 1/10000 dilution. Predicted band size: 60, 38, 29, 46, 36 kDa. Observed band size: 60 kDa.



Immunohistochemistry of paraffin-embedded human small intestine tissue using PACO39502 at dilution of 1:100.