

ARL11 Antibody



PACO39522

Product Information

Size:

50ug

Reactivity:

Human

Source:

Rabbit

Isotype:

IgG

Applications:

ELISA, IHC, IF

Recommended dilutions:

ELISA:1:2000-1:10000, IHC:1:50-1:200,
IF:1:50-1:500

Protein Background:

May play a role in apoptosis. May act as a tumor suppressor.

Gene ID:

ARL11

Uniprot

Q969Q4

Synonyms:

ADP-ribosylation factor-like protein 11 (ADP-ribosylation factor-like tumor suppressor protein 1), ARL11, ARLTS1

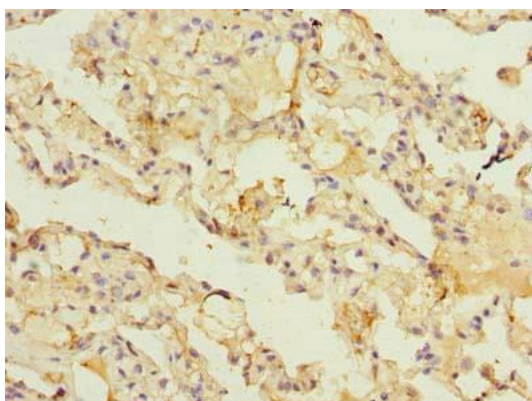
Immunogen:

Recombinant Human ADP-ribosylation factor-like protein 11 protein (2-196AA).

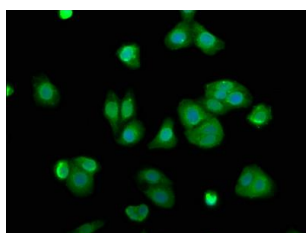
Storage:

Preservative: 0.03% Proclin 300. Constituents: 50% Glycerol, 0.01M PBS, PH 7.4

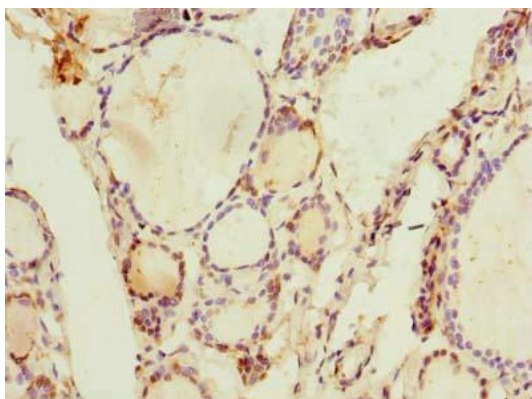
Product Images



Immunohistochemistry of paraffin-embedded human lung tissue using PACO39522 at dilution of 1:100.



Immunofluorescence staining of HepG2 cells with PACO39522 at 1:100, counter-stained with DAPI. The cells were fixed in 4% formaldehyde, permeabilized using 0.2% Triton X-100 and blocked in 10% normal Goat Serum. The cells were then incubated with the antibody overnight at 4°C. The secondary antibody was Alexa Fluor 488-conjugated AffiniPure Goat Anti-Rabbit IgG(H+L).



Immunohistochemistry of paraffin-embedded human thyroid tissue using PACO39522 at dilution of 1:100.