

# GPR146 Antibody



PACO39566

---

## Product Information

**Size:**

50ug

**Reactivity:**

Human

**Source:**

Rabbit

**Isotype:**

IgG

**Applications:**

ELISA, IHC, IF

**Recommended dilutions:**

ELISA:1:2000-1:10000, IHC:1:20-1:200,  
IF:1:50-1:200

**Protein Background:**

Orphan receptor.

**Gene ID:**

GPR146

**Uniprot**

Q96CH1

**Synonyms:**

Probable G-protein coupled receptor 146 (G-protein coupled receptor PGR8), GPR146, PGR8

**Immunogen:**

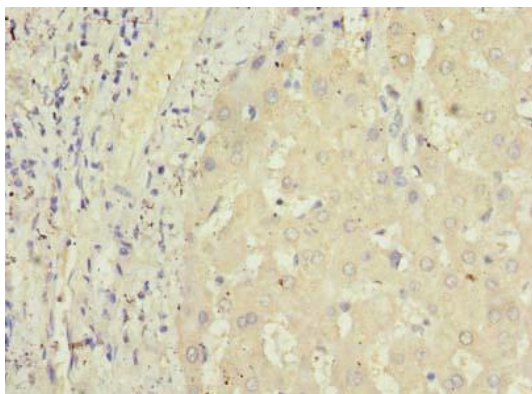
Recombinant Human Probable G-protein coupled receptor 146 protein (301-333AA).

**Storage:**

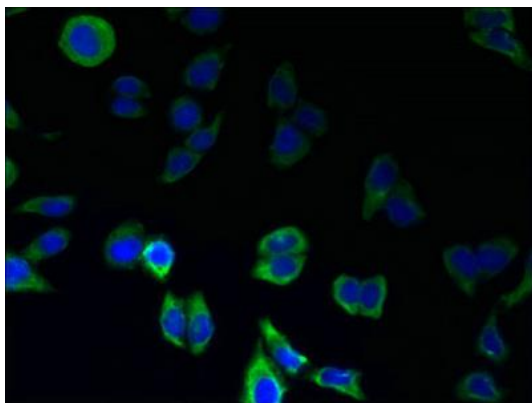
Preservative: 0.03% Proclin 300. Constituents: 50% Glycerol, 0.01M PBS, PH 7.4

## Product Images

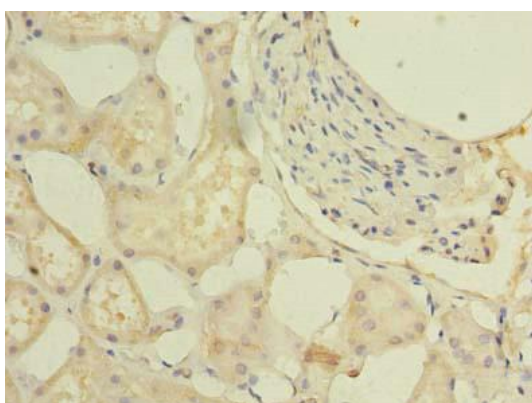
---



Immunohistochemistry of paraffin-embedded human liver tissue using PACO39566 at dilution of 1:100.



Immunofluorescent analysis of LO2 cells using PACO39566 at dilution of 1:100 and Alexa Fluor 488-conjugated AffiniPure Goat Anti-Rabbit IgG(H+L).



Immunohistochemistry of paraffin-embedded human kidney tissue using PACO39566 at dilution of 1:100.