

RPL39L Antibody



PACO39578

Product Information

Size:

50ug

Reactivity:

Human

Source:

Rabbit

Isotype:

IgG

Applications:

ELISA, IHC

Recommended dilutions:

ELISA:1:2000-1:10000, IHC:1:20-1:200

Protein Background:

cytosolic large ribosomal subunit, RNA binding, structural constituent of ribosome, spermatogenesis, translation.

Gene ID:

RPL39L

Uniprot

Q96EH5

Synonyms:

60S ribosomal protein L39-like (60S ribosomal protein L39-2) (Large ribosomal subunit protein eL39-like), RPL39L, RPL39L1

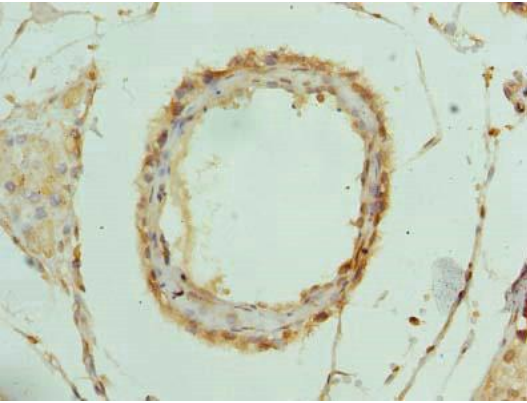
Immunogen:

Recombinant Human 60S ribosomal protein L39-like protein (1-51AA).

Storage:

Preservative: 0.03% Proclin 300. Constituents: 50% Glycerol, 0.01M PBS, PH 7.4

Product Images



Immunohistochemistry of paraffin-embedded human testis tissue using PACO39578 at dilution of 1:100.