

SLC22A24 Antibody



PACO39646

Product Information

Size:

50ug

Reactivity:

Human

Source:

Rabbit

Isotype:

IgG

Applications:

ELISA, IHC, IF

Recommended dilutions:

ELISA:1:2000-1:10000, IHC:1:20-1:200,
IF:1:50-1:200

Protein Background:

integral component of plasma membrane, inorganic anion exchanger activity, sodium-independent organic anion transmembrane transporter activity, anion transmembrane transport, sodium-independent organic anion transport.

Gene ID:

SLC22A24

Uniprot

Q8N4F4

Synonyms:

Solute carrier family 22 member 24, SLC22A24

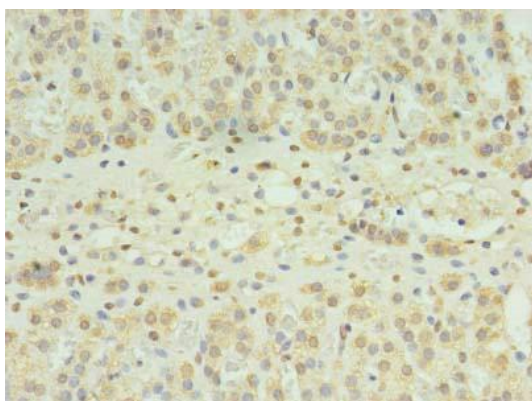
Immunogen:

Recombinant Human Solute carrier family 22 member 24 protein (37-145AA).

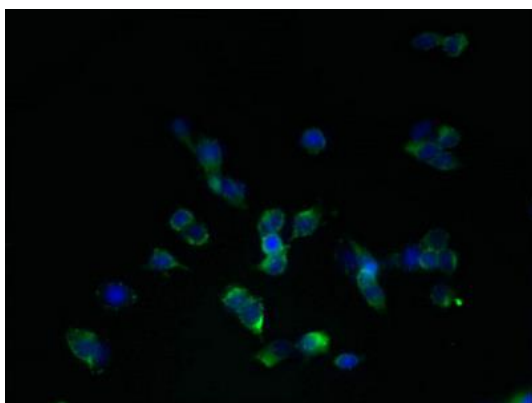
Storage:

Preservative: 0.03% Proclin 300. Constituents: 50% Glycerol, 0.01M PBS, PH 7.4

Product Images



Immunohistochemistry of paraffin-embedded human adrenal gland tissue using PACO39646 at dilution of 1:100.



Immunofluorescent analysis of 293T cells using PACO39646 at dilution of 1:100 and Alexa Fluor 488-conjugated AffiniPure Goat Anti-Rabbit IgG(H+L).