

Plet1 Antibody



PACO39738

Product Information

Size:

50ug

Reactivity:

Mouse, Human

Source:

Rabbit

Isotype:

IgG

Applications:

ELISA, WB, IHC

Recommended dilutions:

ELISA:1:2000-1:10000, WB:1:500-1:2000,
IHC:1:20-1:200

Protein Background:

Modulates leading keratinocyte migration and cellular adhesion to matrix proteins during a wound-healing response and promotes wound repair. May play a role during trichilemmal differentiation of the hair follicle.

Gene ID:

Plet1

Uniprot

Q8VEN2

Synonyms:

Placenta-expressed transcript 1 protein (Antigen mAgK114), Plet1

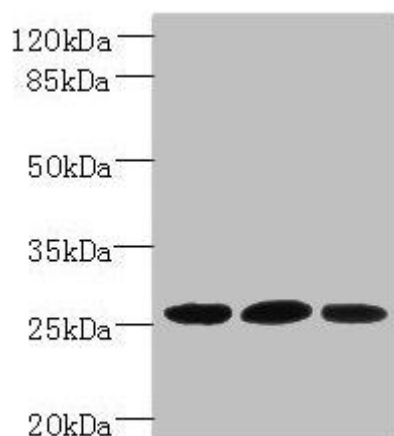
Immunogen:

Recombinant Mouse Placenta-expressed transcript 1 protein (28-218AA).

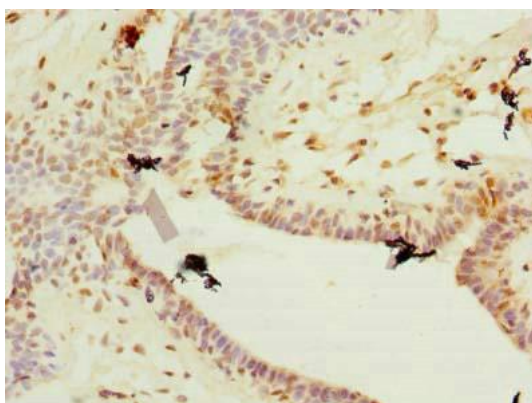
Storage:

Preservative: 0.03% Proclin 300. Constituents: 50% Glycerol, 0.01M PBS, PH 7.4

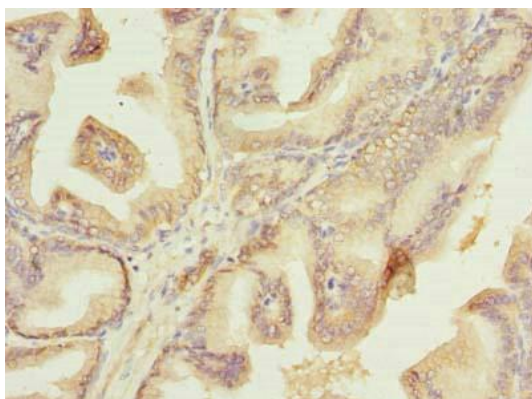
Product Images



Western blot. All lanes: Plet1 antibody at 5 μ g/ml. Lane 1: L929 whole cell lysate. Lane 2: U251 whole cell lysate. Lane 3: Mouse muscle tissue. Secondary: Goat polyclonal to rabbit IgG at 1/10000 dilution. Predicted band size: 26, 21 kDa. Observed band size: 26 kDa.



Immunohistochemistry of paraffin-embedded human breast cancer using PACO39738 at dilution of 1:100.



Immunohistochemistry of paraffin-embedded human prostate cancer using PACO39738 at dilution of 1:100.