

Product Information

Size:

50ug

Reactivity:

Human

Source:

Rabbit

Isotype:

IgG

Applications:

ELISA, IHC

Recommended dilutions:

ELISA:1:2000-1:10000, IHC:1:20-1:200

Protein Background:

E3 ubiquitin-protein ligase. Together with NLK, involved in the ubiquitination and degradation of TCF/LEF. Also exhibits auto-ubiquitination activity in combination with UBE2K. May act as a negative regulator in the Wnt/beta-catenin-mediated signaling pathway.

Gene ID:

RNF138

Uniprot

Q8WVD3

Synonyms:

E3 ubiquitin-protein ligase RNF138 (EC 2.3.2.27) (Nemo-like kinase-associated RING finger protein) (NLK-associated RING finger protein) (hNARF) (RING finger protein 138) (RING-type E3 ubiquitin transferase RNF138), RNF138, NARF

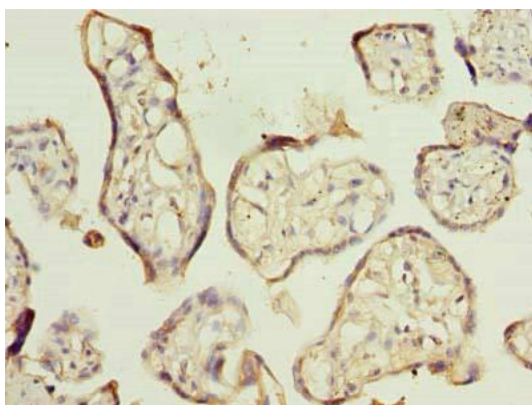
Immunogen:

Recombinant Human E3 ubiquitin-protein ligase RNF138 protein (2-245AA).

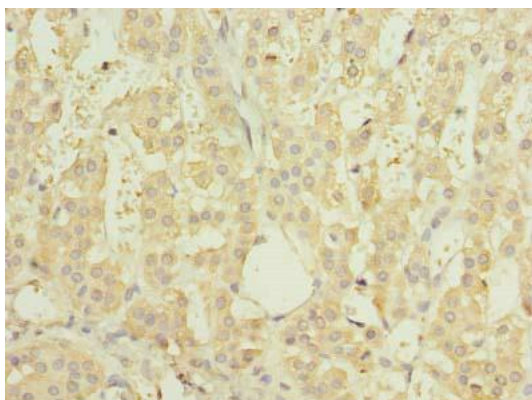
Storage:

Preservative: 0.03% Proclin 300. Constituents: 50% Glycerol, 0.01M PBS, PH 7.4

Product Images



Immunohistochemistry of paraffin-embedded human placenta tissue using PACO39750 at dilution of 1:100.



Immunohistochemistry of paraffin-embedded human adrenal gland tissue using PACO39750 at dilution of 1:100.