

PACO39810

---

## Product Information

**Size:**

50ug

**Reactivity:**

Human

**Source:**

Rabbit

**Isotype:**

IgG

**Applications:**

ELISA, WB, IHC, IF

**Recommended dilutions:**

ELISA:1:2000-1:10000, WB:1:500-1:2000,  
IHC:1:20-1:200, IF:1:50-1:200

**Protein Background:**

Mitochondrial transporter that imports/exports pyrimidine nucleotides into and from mitochondria. Transports preferentially cytosine and uracil (deoxy)nucleoside mono-, di-, and triphosphates by uniport and antiport mechanism. Also transports guanine but not adenine (deoxy)nucleotides. Is inhibited strongly by pyridoxal 5'-phosphate, 4,7-diphenyl-1,10-phenanthroline, tannic acid, and mercurials (mercury dichloride, Mersalyl acid, p-hydroxymercuribenzoate). Participates in mitochondrial genome maintenance, regulation of mitochondrial membrane potential and mitochondrial respiration.

**Gene ID:**

SLC25A36

**Uniprot**

Q96CQ1

**Synonyms:**

Solute carrier family 25 member 36, SLC25A36

**Immunogen:**

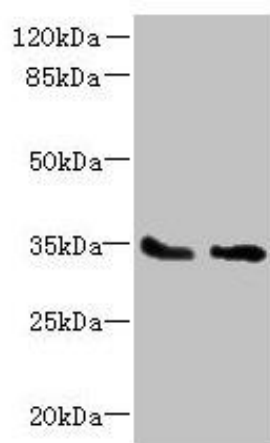
Recombinant Human Solute carrier family 25 member 36 protein (58-110AA).

**Storage:**

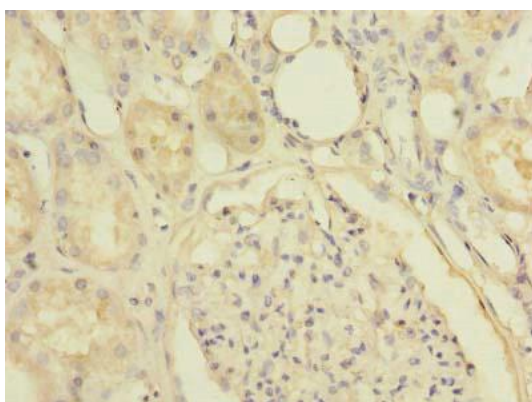
Preservative: 0.03% Proclin 300. Constituents: 50% Glycerol, 0.01M PBS, PH 7.4

## Product Images

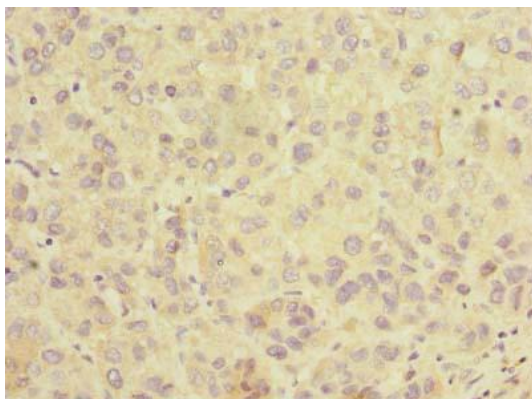
---



Western blot. All lanes: SLC25A36 antibody at 4 $\mu$ g/ml. Lane 1: A431 whole cell lysate. Lane 2: A549 whole cell lysate. Secondary. Goat polyclonal to rabbit IgG at 1/10000 dilution. Predicted band size: 35, 15, 18 kDa. Observed band size: 35 kDa.



Immunohistochemistry of paraffin-embedded human kidney tissue using PACO39810 at dilution of 1:100.



Immunohistochemistry of paraffin-embedded human liver cancer using PACO39810 at dilution of 1:100.