

# MRPL53 Antibody



PACO39818

---

## Product Information

**Size:**

50ug

**Reactivity:**

Human

**Source:**

Rabbit

**Isotype:**

IgG

**Applications:**

ELISA, IHC

**Recommended dilutions:**

ELISA:1:2000-1:10000, IHC:1:20-1:200

**Protein Background:**

**Gene ID:**

MRPL53

**Uniprot**

Q96EL3

**Synonyms:**

39S ribosomal protein L53, mitochondrial (L53mt) (MRP-L53) (Mitochondrial large ribosomal subunit protein mL53), MRPL53

**Immunogen:**

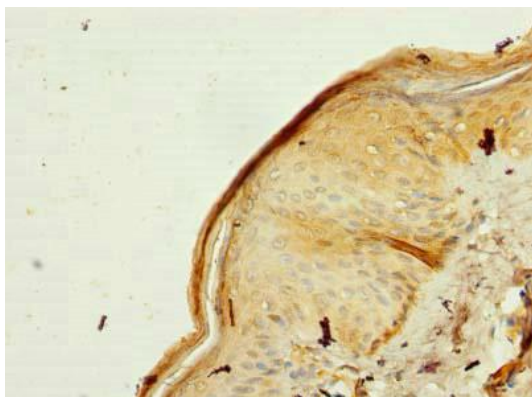
Recombinant Human 39S ribosomal protein L53, mitochondrial protein (8-113AA).

**Storage:**

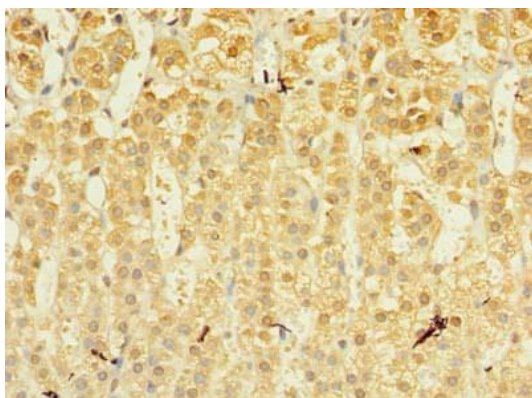
Preservative: 0.03% Proclin 300. Constituents: 50% Glycerol, 0.01M PBS, PH 7.4

## Product Images

---



Immunohistochemistry of paraffin-embedded human skin tissue using PACO39818 at dilution of 1:100.



Immunohistochemistry of paraffin-embedded human adrenal gland tissue using PACO39818 at dilution of 1:100.