

# HSPBAP1 Antibody



PACO39822

---

## Product Information

**Size:**

50ug

**Reactivity:**

Human

**Source:**

Rabbit

**Isotype:**

IgG

**Applications:**

ELISA, IHC

**Recommended dilutions:**

ELISA:1:2000-1:10000, IHC:1:20-1:200

**Protein Background:**

May play a role in cellular stress response.

**Gene ID:**

HSPBAP1

**Uniprot**

Q96EW2

**Synonyms:**

HSPB1-associated protein 1 (27 kDa heat shock protein-associated protein 1) (Protein associated with small stress protein 1), HSPBAP1, PASS1

**Immunogen:**

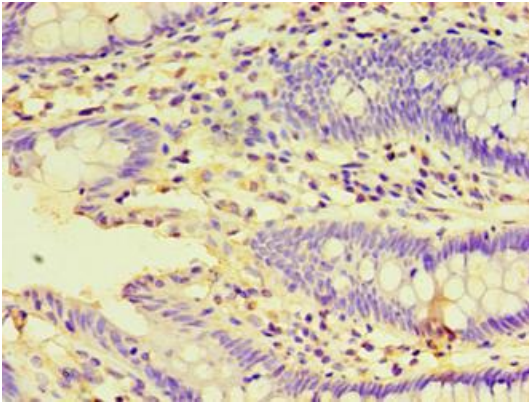
Recombinant Human HSPB1-associated protein 1 (1-488AA).

**Storage:**

Preservative: 0.03% Proclin 300. Constituents: 50% Glycerol, 0.01M PBS, PH 7.4

## Product Images

---



Immunohistochemistry of paraffin-embedded human colon cancer using PACO39822 at dilution of 1:100.