

FAM43A Antibody



PACO39910

Product Information

Size:

50ug

Reactivity:

Human, Mouse

Source:

Rabbit

Isotype:

IgG

Applications:

ELISA, WB, IHC

Recommended dilutions:

ELISA:1:2000-1:10000, WB:1:500-1:5000,
IHC:1:20-1:200

Protein Background:

Gene ID:

FAM43A

Uniprot

Q8N2R8

Synonyms:

Protein FAM43A, FAM43A

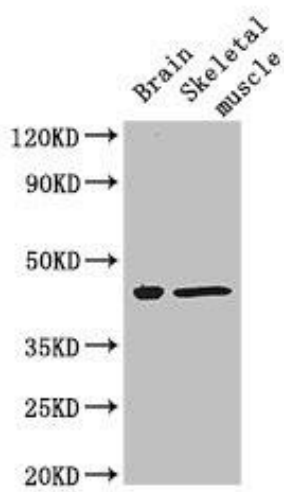
Immunogen:

Recombinant Human Protein FAM43A protein (1-200AA).

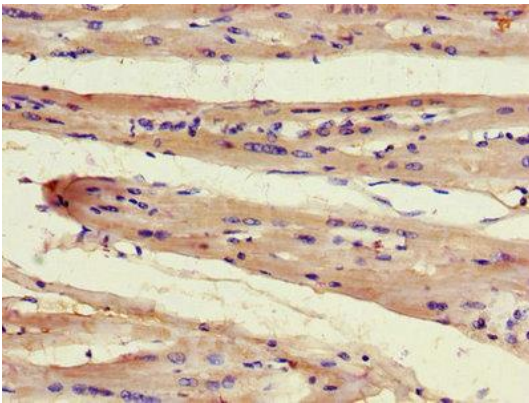
Storage:

Preservative: 0.03% Proclin 300. Constituents: 50% Glycerol, 0.01M PBS, PH 7.4

Product Images



Western Blot. Positive WB detected in: Mouse brain tissue, Mouse skeletal muscle tissue. All lanes: FAM43A antibody at 3 μ g/ml. Secondary. Goat polyclonal to rabbit IgG at 1/50000 dilution. Predicted band size: 46 kDa. Observed band size: 46 kDa.



Immunohistochemistry of paraffin-embedded human heart tissue using PACO39910 at dilution of 1:100.