

# FAM89B Antibody



PACO39926

---

## Product Information

**Size:**

50ug

**Reactivity:**

Human

**Source:**

Rabbit

**Isotype:**

IgG

**Applications:**

ELISA, IHC, IF

**Recommended dilutions:**

ELISA:1:2000-1:10000, IHC:1:20-1:200,  
IF:1:20-1:200

**Protein Background:**

Negatively regulates TGF-beta-induced signaling; in cooperation with SKI prevents the translocation of SMAD2 from the nucleus to the cytoplasm in response to TGF-beta.

**Gene ID:**

FAM89B

**Uniprot**

Q8N5H3

**Synonyms:**

Leucine repeat adapter protein 25, FAM89B, Lrap25

**Immunogen:**

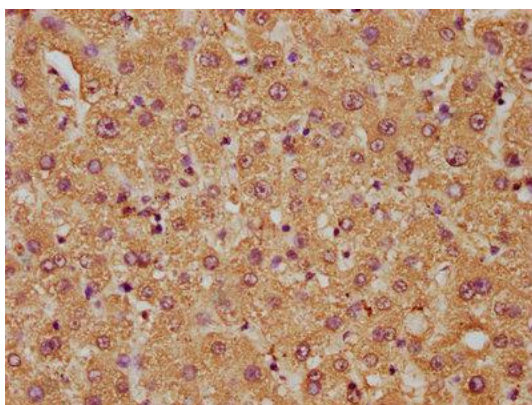
Recombinant Human Leucine repeat adapter protein 25 protein (1-162AA).

**Storage:**

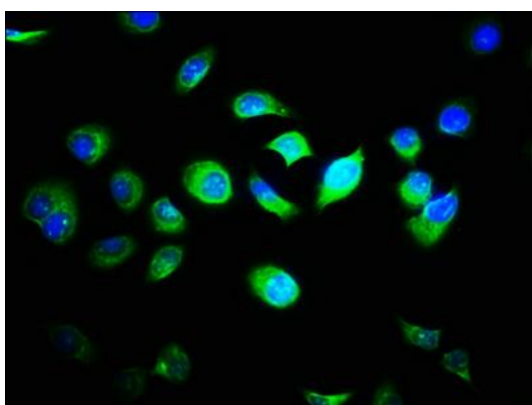
Preservative: 0.03% Proclin 300. Constituents: 50% Glycerol, 0.01M PBS, PH 7.4

## Product Images

---



IHC image of PACO39926 diluted at 1:50 and staining in paraffin-embedded human liver tissue performed on a Leica Bond™ system. After dewaxing and hydration, antigen retrieval was mediated by high pressure in a citrate buffer (pH 6.0). Section was blocked with 10% normal goat serum 30min at RT. Then primary antibody (1% BSA) was incubated at 4°C overnight. The primary is detected by a biotinylated secondary antibody and visualized using an HRP conjugated SP system.



Immunofluorescence staining of A549 cells with PACO39926 at 1:33, counter-stained with DAPI. The cells were fixed in 4% formaldehyde, permeabilized using 0.2% Triton X-100 and blocked in 10% normal Goat Serum. The cells were then incubated with the antibody overnight at 4°C. The secondary antibody was Alexa Fluor 488-conjugated AffiniPure Goat Anti-Rabbit IgG(H+L).