

RHEBL1 Antibody



PACO39970

Product Information

Size:

50ug

Reactivity:

Human

Source:

Rabbit

Isotype:

IgG

Applications:

ELISA, IHC

Recommended dilutions:

ELISA:1:2000-1:10000, IHC:1:20-1:200

Protein Background:

Binds GTP and exhibits intrinsic GTPase activity. May activate NF-kappa-B-mediated gene transcription. Promotes signal transduction through MTOR, activates RPS6KB1, and is a downstream target of the small GTPase-activating proteins TSC1 and TSC2.

Gene ID:

RHEBL1

Uniprot

Q8TAI7

Synonyms:

GTPase RhebL1 (Ras homolog enriched in brain like-1 c) (RhebL1c) (Ras homolog enriched in brain-like protein 1) (Rheb-like protein 1) (Rheb2), RHEBL1

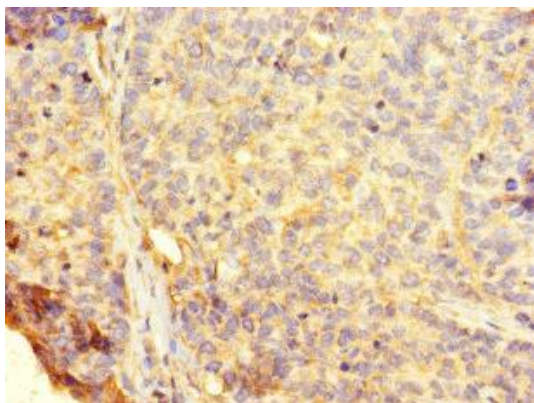
Immunogen:

Recombinant Human GTPase RhebL1 protein (1-180AA).

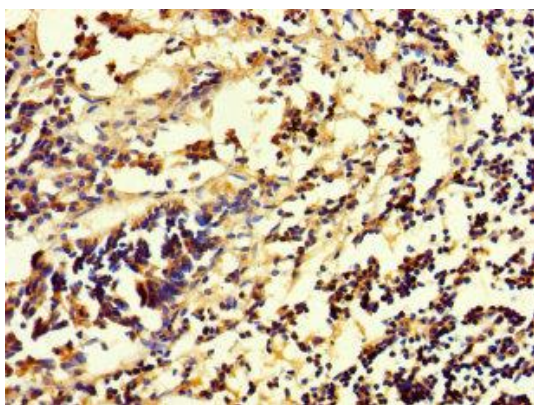
Storage:

Preservative: 0.03% Proclin 300. Constituents: 50% Glycerol, 0.01M PBS, PH 7.4

Product Images



Immunohistochemistry of paraffin-embedded human ovarian cancer using PACO39970 at dilution of 1:100.



Immunohistochemistry of paraffin-embedded human appendix tissue using PACO39970 at dilution of 1:100.