

KRT35 Antibody



PACO40054

Product Information

Size:

50ug

Reactivity:

Human

Source:

Rabbit

Isotype:

IgG

Applications:

ELISA, WB, IHC

Recommended dilutions:

ELISA:1:2000-1:10000, WB:1:1000-1:5000,
IHC:1:20-1:200

Protein Background:

extracellular exosome, extracellular space, anatomical structure morphogenesis.

Gene ID:

KRT35

Uniprot

Q92764

Synonyms:

Keratin, type I cuticular Ha5 (Hair keratin, type I Ha5) (Keratin-35) (K35), KRT35, HHA5
HKA5 KRTHA5

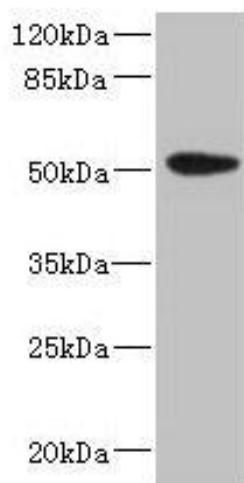
Immunogen:

Recombinant Human Keratin, type I cuticular Ha5 protein (1-455AA).

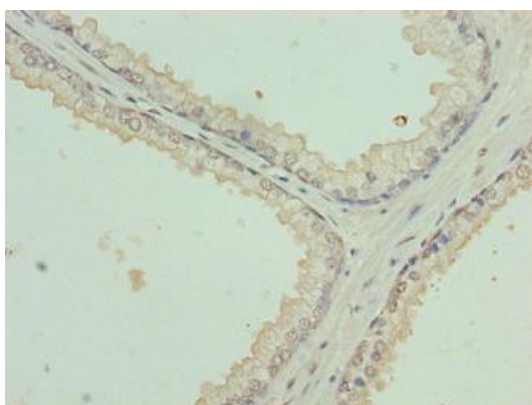
Storage:

Preservative: 0.03% Proclin 300. Constituents: 50% Glycerol, 0.01M PBS, PH 7.4

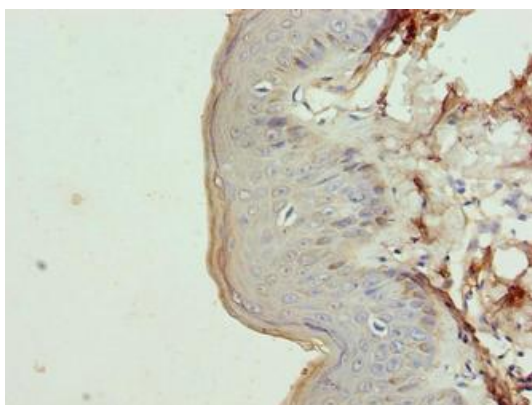
Product Images



Western blot. All lanes: KRT35 antibody at 4 μ g/ml + PC-3 whole cell lysate. Secondary. Goat polyclonal to rabbit IgG at 1/10000 dilution. Predicted band size: 51 kDa. Observed band size: 51 kDa.



Immunohistochemistry of paraffin-embedded human prostate cancer using PACO40054 at dilution of 1:100.



Immunohistochemistry of paraffin-embedded human skin tissue using PACO40054 at dilution of 1:100.