

# MYLPF Antibody



PACO40074

---

## Product Information

**Size:**

50ug

**Reactivity:**

Human, Mouse

**Source:**

Rabbit

**Isotype:**

IgG

**Applications:**

ELISA, WB

**Recommended dilutions:**

ELISA:1:2000-1:10000, WB:1:1000-1:5000

**Protein Background:**

**Gene ID:**

MYLPF

**Uniprot**

Q96A32

**Synonyms:**

Myosin regulatory light chain 2, skeletal muscle isoform (Fast skeletal myosin light chain 2) (MLC2B), MYLPF

**Immunogen:**

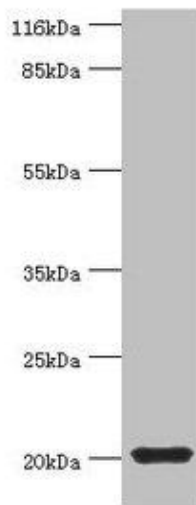
Recombinant Human Myosin regulatory light chain 2, skeletal muscle isoform protein (2-169AA).

**Storage:**

Preservative: 0.03% Proclin 300. Constituents: 50% Glycerol, 0.01M PBS, PH 7.4

## Product Images

---



Western blot. All lanes: MYLPF antibody at 2 $\mu$ g/ml + Mouse skeletal muscle tissue. Secondary. Goat polyclonal to rabbit IgG at 1/10000 dilution. Predicted band size: 20 kDa. Observed band size: 20 kDa.