

SLC25A46 Antibody



PACO40078

Product Information

Size:

50ug

Reactivity:

Human, Mouse

Source:

Rabbit

Isotype:

IgG

Applications:

ELISA, WB, IF

Recommended dilutions:

ELISA:1:2000-1:10000, WB:1:1000-1:5000,
IF:1:50-1:200

Protein Background:

Gene ID:

SLC25A46

Uniprot

Q96AG3

Synonyms:

Solute carrier family 25 member 46, SLC25A46, TB1

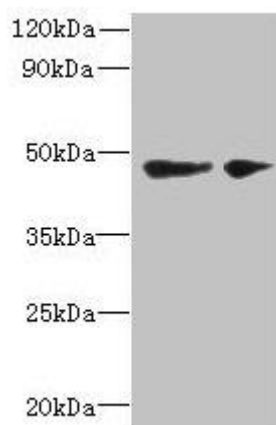
Immunogen:

Recombinant Human Solute carrier family 25 member 46 protein (1-102AA).

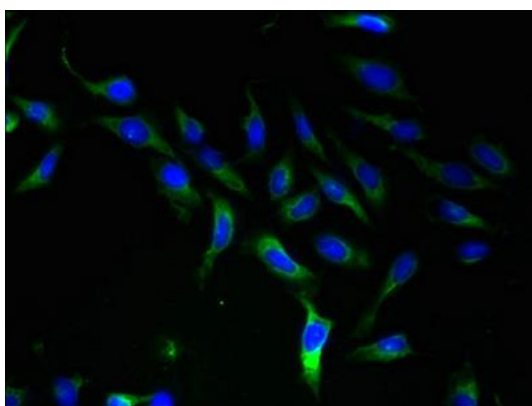
Storage:

Preservative: 0.03% Proclin 300. Constituents: 50% Glycerol, 0.01M PBS, PH 7.4

Product Images



Western blot. All lanes: SLC25A46 antibody at 6 μ g/ml. Lane 1: Mouse brain tissue. Lane 2: Jurkat whole cell lysate. Secondary: Goat polyclonal to rabbit IgG at 1/10000 dilution. Predicted band size: 47, 31, 38 kDa. Observed band size: 47 kDa.



Immunofluorescent analysis of HeLa cells using PACO40078 at dilution of 1:100 and Alexa Fluor 488-conjugated AffiniPure Goat Anti-Rabbit IgG(H+L).