

PACO40086

Product Information

Size:

50ug

Reactivity:

Human

Source:

Rabbit

Isotype:

IgG

Applications:

ELISA, IHC

Recommended dilutions:

ELISA:1:2000-1:10000, IHC:1:20-1:200

Protein Background:

Interacts with MUS81 to form a DNA structure-specific endonuclease with substrate preference for branched DNA structures with a 5'-end at the branch nick. Typical substrates include 3'-flap structures, replication forks and nicked Holliday junctions. May be required in mitosis for the processing of stalled or collapsed replication forks.

Gene ID:

EME1

Uniprot

Q96AY2

Synonyms:

Crossover junction endonuclease EME1 (EC 3.1.22. -) (MMS4 homolog) (hMMS4), EME1, MMS4

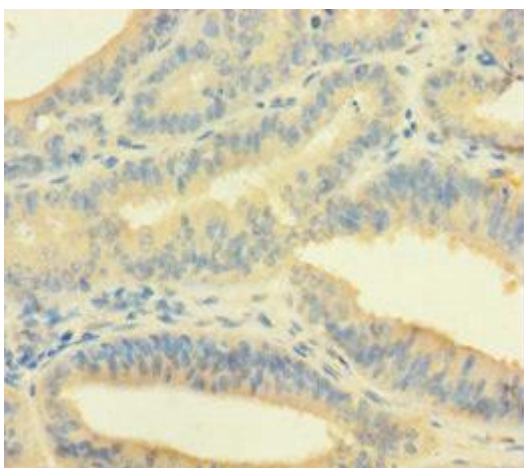
Immunogen:

Recombinant Human Crossover junction endonuclease EME1 protein (1-583AA).

Storage:

Preservative: 0.03% Proclin 300. Constituents: 50% Glycerol, 0.01M PBS, PH 7.4

Product Images



Immunohistochemistry of paraffin-embedded human endometrial cancer using PACO40086 at dilution of 1:100.



Immunohistochemistry of paraffin-embedded human adrenal gland tissue using PACO40086 at dilution of 1:100.