

SEC22A Antibody



PACO40142

Product Information

Size:

50ug

Reactivity:

Human

Source:

Rabbit

Isotype:

IgG

Applications:

ELISA, IHC, IF

Recommended dilutions:

ELISA:1:2000-1:10000, IHC:1:20-1:200,
IF:1:50-1:200

Protein Background:

May be involved in vesicle transport between the ER and the Golgi complex.

Gene ID:

SEC22A

Uniprot

Q96IW7

Synonyms:

Vesicle-trafficking protein SEC22a (SEC22 vesicle-trafficking protein homolog A) (SEC22 vesicle-trafficking protein-like 2), SEC22A, SEC22L2

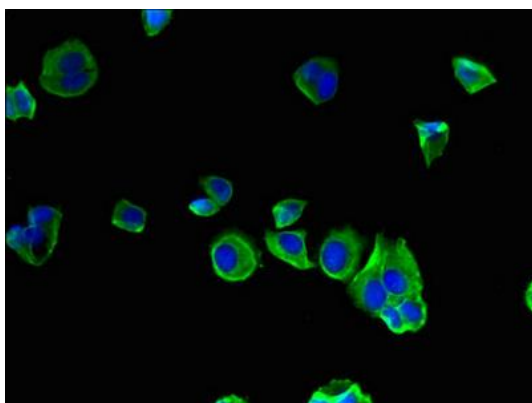
Immunogen:

Recombinant Human Vesicle-trafficking protein SEC22a protein (10-187AA).

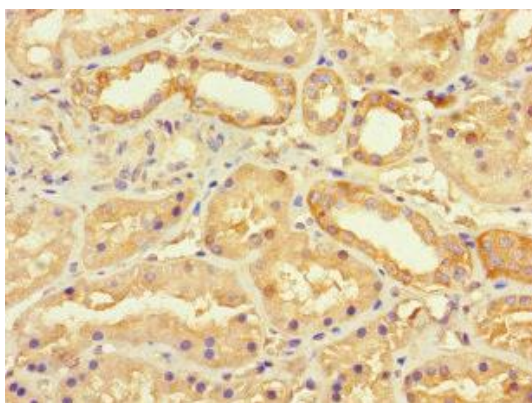
Storage:

Preservative: 0.03% Proclin 300. Constituents: 50% Glycerol, 0.01M PBS, PH 7.4

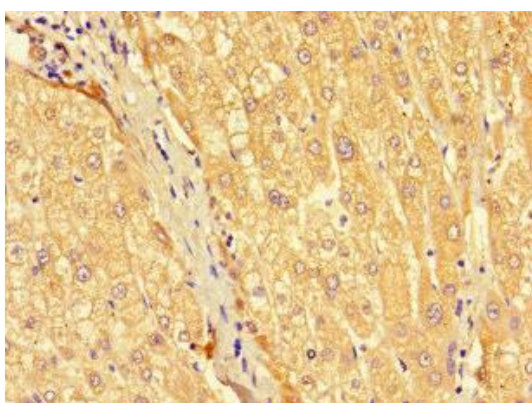
Product Images



Immunofluorescent analysis of MCF-7 cells using PACO40142 at dilution of 1:100 and Alexa Fluor 488-conjugated AffiniPure Goat Anti-Rabbit IgG(H+L).



Immunohistochemistry of paraffin-embedded human kidney tissue using PACO40142 at dilution of 1:100.



Immunohistochemistry of paraffin-embedded human liver tissue using PACO40142 at dilution of 1:100.