

# GPA33 Antibody



PACO40202

---

## Product Information

**Size:**

50ug

**Reactivity:**

Human

**Source:**

Rabbit

**Isotype:**

IgG

**Applications:**

ELISA, WB, IHC, IF

**Recommended dilutions:**

ELISA:1:2000-1:10000, WB:1:500-1:5000,  
IHC:1:20-1:200, IF:1:50-1:200

**Protein Background:**

May play a role in cell-cell recognition and signaling.

**Gene ID:**

GPA33

**Uniprot**

Q99795

**Synonyms:**

Cell surface A33 antigen (Glycoprotein A33), GPA33

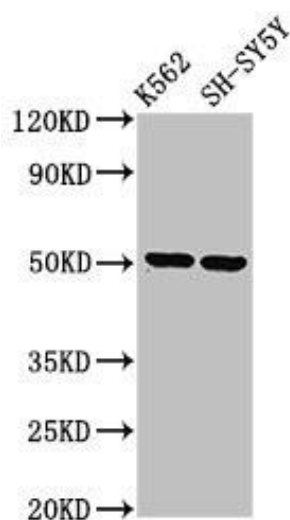
**Immunogen:**

Recombinant Human Cell surface A33 antigen protein (22-235AA).

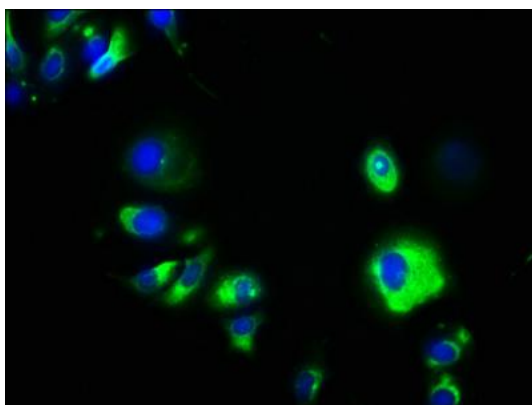
**Storage:**

Preservative: 0.03% Proclin 300. Constituents: 50% Glycerol, 0.01M PBS, PH 7.4

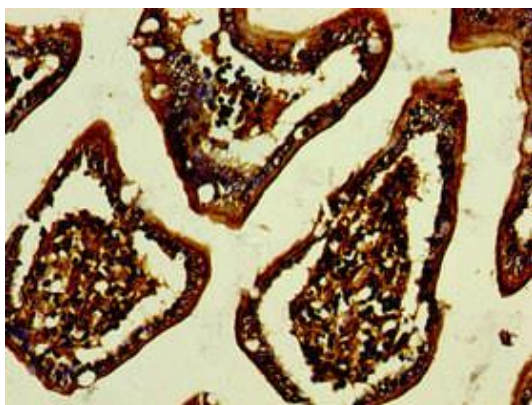
## Product Images



Western Blot. Positive WB detected in: K562 whole cell lysate, SH-SY5Y whole cell lysate. All lanes: GPA33 antibody at 3.2µg/ml. Secondary. Goat polyclonal to rabbit IgG at 1/50000 dilution. Predicted band size: 36 kDa. Observed band size: 50 kDa.



Immunofluorescence staining of MCF-7 cells with PACO40202 at 1:133, counter-stained with DAPI. The cells were fixed in 4% formaldehyde, permeabilized using 0.2% Triton X-100 and blocked in 10% normal Goat Serum. The cells were then incubated with the antibody overnight at 4°C. The secondary antibody was Alexa Fluor 488-conjugated AffiniPure Goat Anti-Rabbit IgG(H+L).



Immunohistochemistry of paraffin-embedded human small intestine tissue using PACO40202 at dilution of 1:100.