

# C2orf49 Antibody



PACO40358

---

## Product Information

**Size:**

50ug

**Reactivity:**

Human

**Source:**

Rabbit

**Isotype:**

IgG

**Applications:**

ELISA, IHC

**Recommended dilutions:**

ELISA:1:2000-1:10000, IHC:1:20-1:200

**Protein Background:**

nucleoplasm, tRNA-splicing ligase complex, gene expression, tRNA processing.

**Gene ID:**

C2orf49

**Uniprot**

Q9BVC5

**Synonyms:**

Ashwin, C2orf49

**Immunogen:**

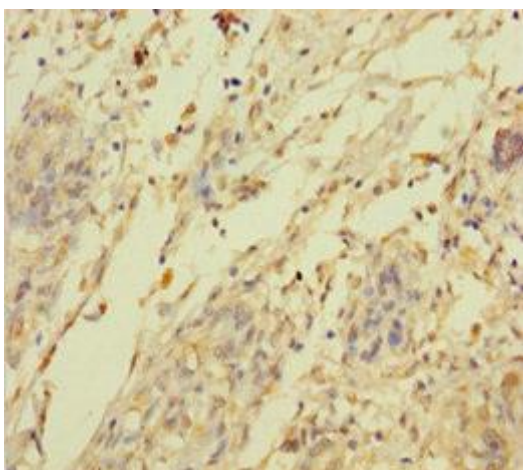
Recombinant Human Ashwin protein (1-232AA).

**Storage:**

Preservative: 0.03% Proclin 300. Constituents: 50% Glycerol, 0.01M PBS, PH 7.4

## Product Images

---



Immunohistochemistry of paraffin-embedded human pancreatic cancer using PACO40358 at dilution of 1:100.