

MRPL18 Antibody



PACO40390

Product Information

Size:

50ug

Reactivity:

Human

Source:

Rabbit

Isotype:

IgG

Applications:

ELISA, WB, IHC

Recommended dilutions:

ELISA:1:2000-1:10000, WB:1:500-1:2000,
IHC:1:20-1:200

Protein Background:

Together with thiosulfate sulfurtransferase (TST), acts as a mitochondrial import factor for the cytosolic 5S rRNA. The precursor form shows RNA chaperone activity; is able to fold the 5S rRNA into an import-competent conformation that is recognized by rhodanese (TST). Both the cytoplasmic and mitochondrial forms are able to bind to the helix IV-loop D in the gamma domain of the 5S rRNA.

Gene ID:

MRPL18

Uniprot

Q9H0U6

Synonyms:

39S ribosomal protein L18, mitochondrial (L18mt) (MRP-L18) (Mitochondrial large ribosomal subunit protein uL18m), MRPL18

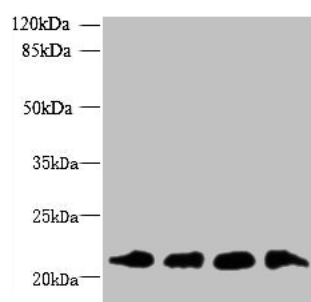
Immunogen:

Recombinant Human 39S ribosomal protein L18, mitochondrial protein (14-180AA).

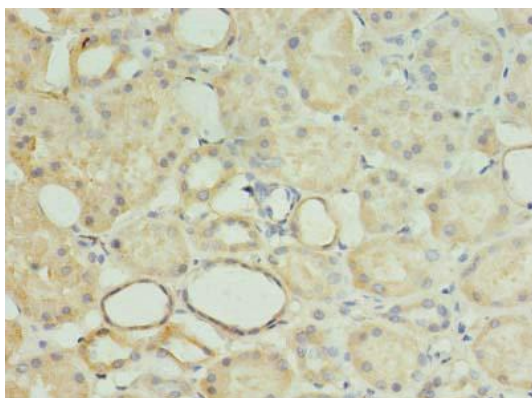
Storage:

Preservative: 0.03% Proclin 300. Constituents: 50% Glycerol, 0.01M PBS, PH 7.4

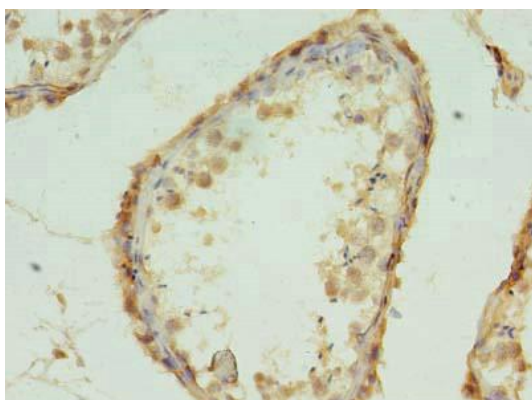
Product Images



Western blot. All lanes: MRPL18 antibody at 8 μ g/ml. Lane 1: U251 whole cell lysate. Lane 2: THP-1 whole cell lysate. Lane 3: PC-3 whole cell lysate. Lane 4: U87 whole cell lysate. Secondary: Goat polyclonal to rabbit IgG at 1/10000 dilution. Predicted band size: 21 kDa. Observed band size: 21 kDa.



Immunohistochemistry of paraffin-embedded human kidney tissue using PACO40390 at dilution of 1:100.



Immunohistochemistry of paraffin-embedded human testis tissue using PACO40390 at dilution of 1:100.