

# C11orf68 Antibody



PACO40398

---

## Product Information

**Size:**

50ug

**Reactivity:**

Human, Mouse

**Source:**

Rabbit

**Isotype:**

IgG

**Applications:**

ELISA, WB, IHC

**Recommended dilutions:**

ELISA:1:2000-1:10000, WB:1:500-1:2000,  
IHC:1:20-1:200

**Protein Background:**

poly(A) RNA binding.

**Gene ID:**

C11orf68

**Uniprot**

Q9H3H3

**Synonyms:**

UPF0696 protein C11orf68 (Basophilic leukemia-expressed protein Bles03) (Protein p5326), C11orf68, BLES03

**Immunogen:**

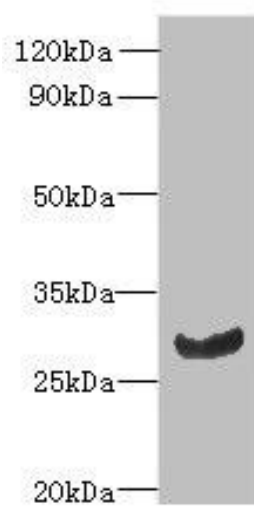
Recombinant Human UPF0696 protein C11orf68 protein (1-251AA).

**Storage:**

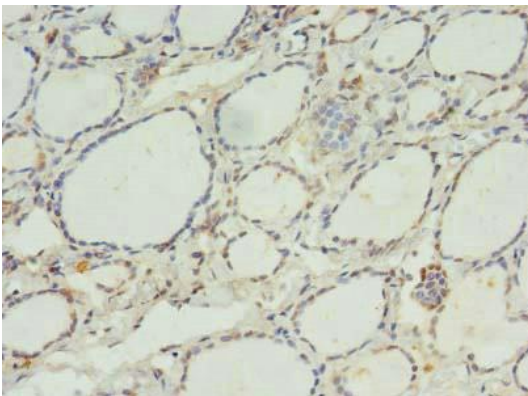
Preservative: 0.03% Proclin 300. Constituents: 50% Glycerol, 0.01M PBS, PH 7.4

## Product Images

---



Western blot. All lanes: C11orf68 antibody at 3 $\mu$ g/ml + Mouse liver tissue. Secondary. Goat polyclonal to rabbit IgG at 1/10000 dilution. Predicted band size: 28, 32 kDa. Observed band size: 28 kDa.



Immunohistochemistry of paraffin-embedded human thyroid tissue using PACO40398 at dilution of 1:100.