

# CST9L Antibody



PACO40402

---

## Product Information

**Size:**

50ug

**Reactivity:**

Human

**Source:**

Rabbit

**Isotype:**

IgG

**Applications:**

ELISA, IHC

**Recommended dilutions:**

ELISA:1:2000-1:10000, IHC:1:20-1:200

**Protein Background:**

**Gene ID:**

CST9L

**Uniprot**

Q9H4G1

**Synonyms:**

Cystatin-9-like (Testatin), CST9L, CTES7B

**Immunogen:**

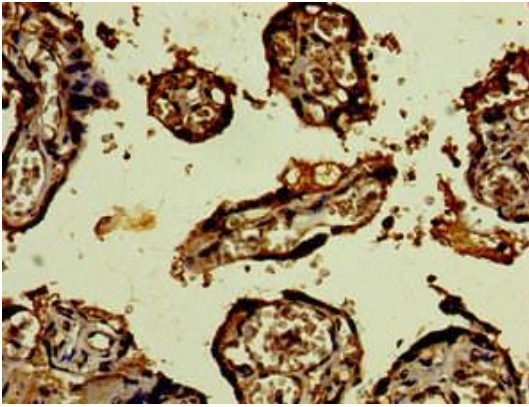
Recombinant Human Cystatin-9-like protein (29-147AA).

**Storage:**

Preservative: 0.03% Proclin 300. Constituents: 50% Glycerol, 0.01M PBS, PH 7.4

## Product Images

---



Immunohistochemistry of paraffin-embedded human placenta tissue using PACO40402 at dilution of 1:100.