

# LMAN1L Antibody



PACO40446

---

## Product Information

**Size:**

50ug

**Reactivity:**

Human

**Source:**

Rabbit

**Isotype:**

IgG

**Applications:**

ELISA, IHC

**Recommended dilutions:**

ELISA:1:2000-1:10000, IHC:1:20-1:200

**Protein Background:**

**Gene ID:**

LMAN1L

**Uniprot**

Q9HAT1

**Synonyms:**

Protein ERGIC-53-like (ERGIC53-like protein) (Lectin mannose-binding 1-like) (LMAN1-like protein), LMAN1L, ERGL

**Immunogen:**

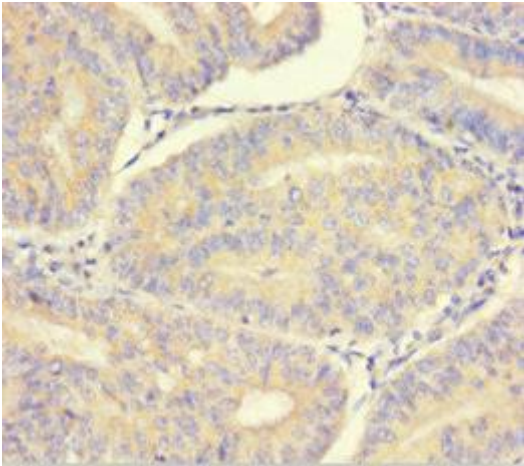
Recombinant Human Protein ERGIC-53-like protein (26-462AA).

**Storage:**

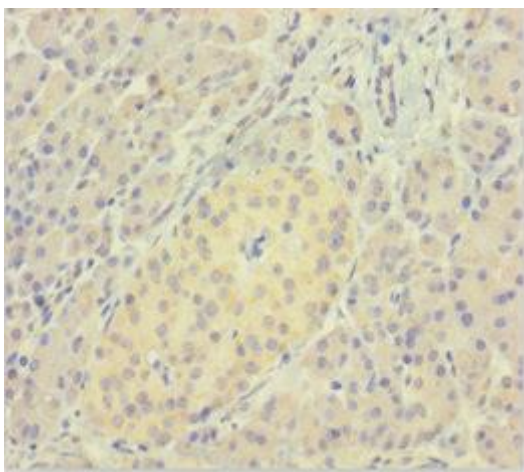
Preservative: 0.03% Proclin 300. Constituents: 50% Glycerol, 0.01M PBS, PH 7.4

## Product Images

---



Immunohistochemistry of paraffin-embedded human endometrial cancer using PACO40446 at dilution of 1:100.



Immunohistochemistry of paraffin-embedded human pancreatic tissue using PACO40446 at dilution of 1:100.