

KCNK13 Antibody



PACO40450

Product Information

Size:

50ug

Reactivity:

Human

Source:

Rabbit

Isotype:

IgG

Applications:

ELISA, WB, IHC, IF

Recommended dilutions:

ELISA:1:2000-1:10000, WB:1:500-1:2000,
IHC:1:20-1:200, IF:1:50-1:200

Protein Background:

Potassium channel displaying weak inward rectification in symmetrical K(+) solution.

Gene ID:

KCNK13

Uniprot

Q9HB14

Synonyms:

Potassium channel subfamily K member 13 (Tandem pore domain halothane-inhibited potassium channel 1) (THIK-1), KCNK13

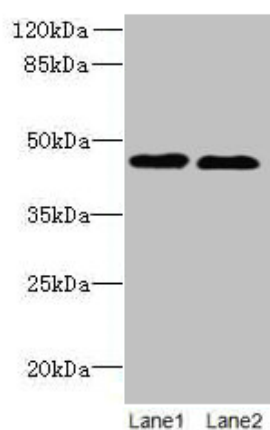
Immunogen:

Recombinant Human Potassium channel subfamily K member 13 protein (292-408AA).

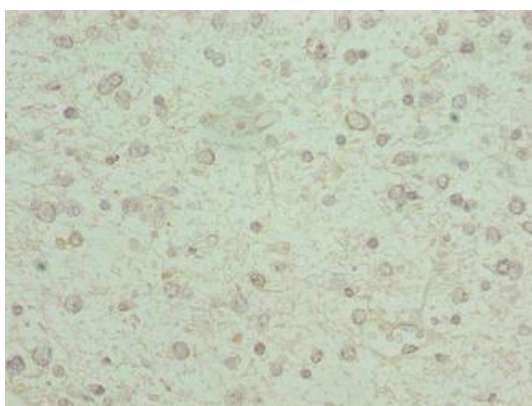
Storage:

Preservative: 0.03% Proclin 300. Constituents: 50% Glycerol, 0.01M PBS, PH 7.4

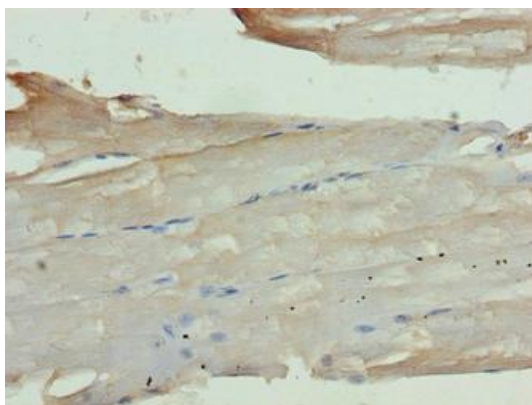
Product Images



Western blot. All lanes: KCNK13 antibody at 8 μ g/ml. Lane 1: HepG2 whole cell lysate. Lane 2: LO2 whole cell lysate. Secondary. Goat polyclonal to rabbit IgG at 1/10000 dilution. Predicted band size: 46 kDa. Observed band size: 46 kDa.



Immunohistochemistry of paraffin-embedded human glioma using PACO40450 at dilution of 1:100.



Immunohistochemistry of paraffin-embedded human skeletal muscle tissue using PACO40450 at dilution of 1:100.