

PACO40506

Product Information

Size:

50ug

Reactivity:

Human

Source:

Rabbit

Isotype:

IgG

Applications:

ELISA, IHC

Recommended dilutions:

ELISA:1:2000-1:10000, IHC:1:20-1:200

Protein Background:

CCNA2/CDK2 regulatory protein that transiently maintains CCNA2 in the cytoplasm.

Gene ID:

SCAPER

Uniprot

Q9BY12

Synonyms:

S phase cyclin A-associated protein in the endoplasmic reticulum (S phase cyclin A-associated protein in the ER) (Zinc finger protein 291), SCAPER, KIAA1454 ZNF291

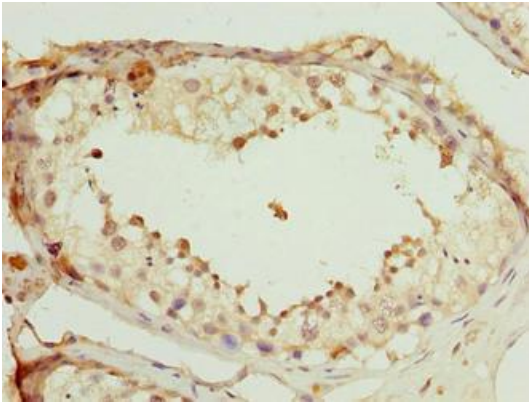
Immunogen:

Recombinant Human S phase cyclin A-associated protein in the endoplasmic reticulum protein (1109-1400AA).

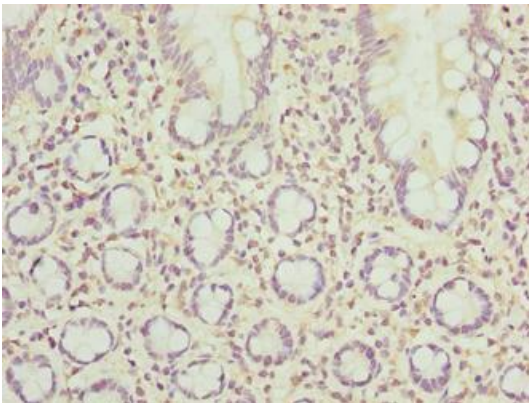
Storage:

Preservative: 0.03% Proclin 300. Constituents: 50% Glycerol, 0.01M PBS, PH 7.4

Product Images



Immunohistochemistry of paraffin-embedded human testis tissue using PACO40506 at dilution of 1:100.



Immunohistochemistry of paraffin-embedded human small intestine tissue using PACO40506 at dilution of 1:100.