

SLC6A16 Antibody



PACO40522

Product Information

Size:

50ug

Reactivity:

Human

Source:

Rabbit

Isotype:

IgG

Applications:

ELISA, IHC, IF

Recommended dilutions:

ELISA:1:2000-1:10000, IHC:1:20-1:200,
IF:1:50-1:200

Protein Background:

integral component of plasma membrane, intracellular, amino acid, transmembrane transporter activity, neurotransmitter transporter activity, amino acid, transmembrane transport, neurotransmitter transport.

Gene ID:

SLC6A16

Uniprot

Q9GZN6

Synonyms:

Orphan sodium- and chloride-dependent neurotransmitter transporter NTT5 (Solute carrier family 6 member 16), SLC6A16, NTT5

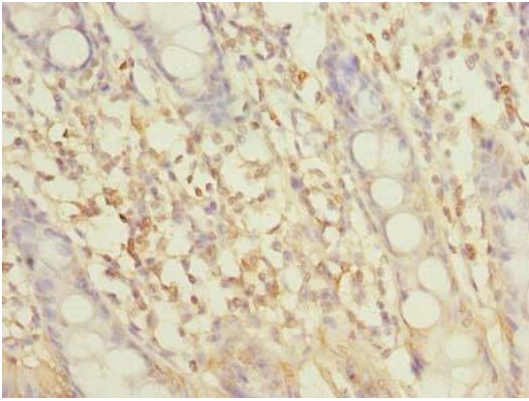
Immunogen:

Recombinant Human Orphan sodium- and chloride-dependent neurotransmitter transporter NTT5 protein (1-138AA).

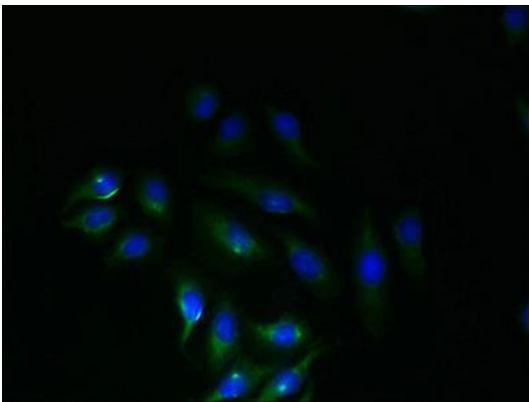
Storage:

Preservative: 0.03% Proclin 300. Constituents: 50% Glycerol, 0.01M PBS, PH 7.4

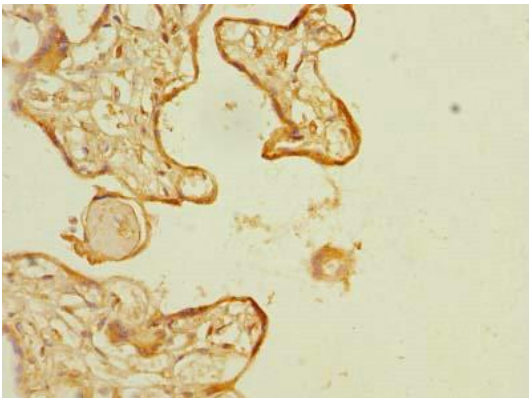
Product Images



Immunohistochemistry of paraffin-embedded human colon tissue using PACO40522 at dilution of 1:100.



Immunofluorescent analysis of A549 cells using PACO40522 at dilution of 1:100 and Alexa Fluor 488-conjugated AffiniPure Goat Anti-Rabbit IgG(H+L).



Immunohistochemistry of paraffin-embedded human placenta tissue using PACO40522 at dilution of 1:100.