

PACO40614

Product Information

Size:

50ug

Reactivity:

Human

Source:

Rabbit

Isotype:

IgG

Applications:

ELISA, WB, IHC, IF

Recommended dilutions:

ELISA:1:2000-1:10000, WB:1:500-1:2000,
IHC:1:20-1:200, IF:1:50-1:200

Protein Background:

Has glycerophosphoinositol inositolphosphodiesterase activity and specifically hydrolyzes glycerophosphoinositol, with no activity for other substrates such as glycerophosphoinositol 4-phosphate, glycerophosphocholine, glycerophosphoethanolamine, and glycerophosphoserine. Accelerates the program of osteoblast differentiation and growth. May play a role in remodeling of the actin cytoskeleton.

Gene ID:

GDPD2

Uniprot

Q9HCC8

Synonyms:

Glycerophosphoinositol inositolphosphodiesterase GDPD2 (EC 3.1.4.43) (Glycerophosphodiester phosphodiesterase 3) (Glycerophosphodiester phosphodiesterase domain-containing protein 2) (Osteoblast differentiation promoting factor), GDPD2, GDE3 OBDPF

Immunogen:

Recombinant Human Glycerophosphoinositol inositolphosphodiesterase GDPD2 protein (210-490AA).

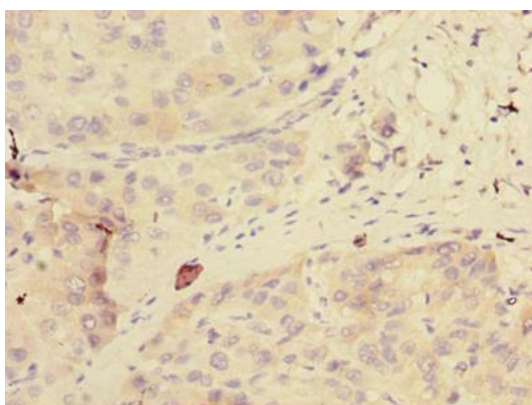
Storage:

Preservative: 0.03% Proclin 300. Constituents: 50% Glycerol, 0.01M PBS, PH 7.4

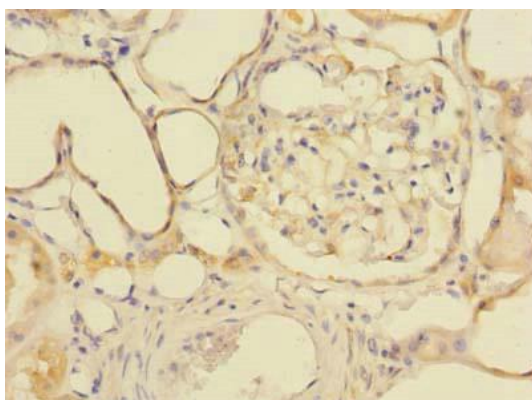
Product Images



Western blot. All lanes: GDPD2 antibody at 1.5 μ g/ml + A431 whole cell lysate. Secondary. Goat polyclonal to rabbit IgG at 1/10000 dilution. Predicted band size: 62, 53, 67 kDa. Observed band size: 62 kDa.



Immunohistochemistry of paraffin-embedded human liver cancer using PACO40614 at dilution of 1:100.



Immunohistochemistry of paraffin-embedded human kidney tissue using PACO40614 at dilution of 1:100.