

Product Information

Size:

50ug

Reactivity:

Human

Source:

Rabbit

Isotype:

IgG

Applications:

ELISA, IHC

Recommended dilutions:

ELISA:1:2000-1:10000, IHC:1:20-1:200

Protein Background:

Acts as one of several non-catalytic accessory components of the cytoplasmic dynein 1 complex that are thought to be involved in linking dynein to cargos and to adapter proteins that regulate dynein function. Cytoplasmic dynein 1 acts as a motor for the intracellular retrograde motility of vesicles and organelles along microtubules.

Gene ID:

DYNLRB1

Uniprot

Q9NP97

Synonyms:

Dynein light chain roadblock-type 1 (Bithoraxoid-like protein) (BLP) (Dynein light chain 2A, cytoplasmic) (Dynein-associated protein Km23) (Roadblock domain-containing protein 1), DYNLRB1, BITH DNCL2A DNLC2A ROBLD1

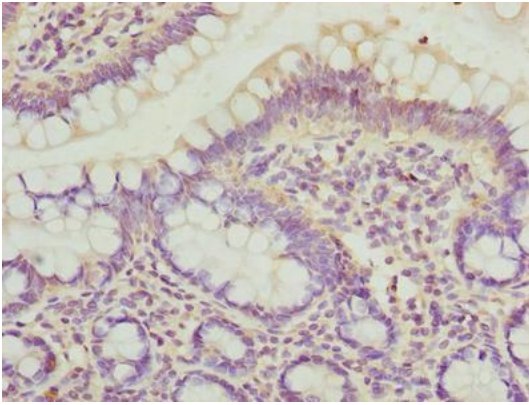
Immunogen:

Recombinant Human Dynein light chain roadblock-type 1 protein (3-96AA).

Storage:

Preservative: 0.03% Proclin 300. Constituents: 50% Glycerol, 0.01M PBS, PH 7.4

Product Images



Immunohistochemistry of paraffin-embedded human small intestine tissue using PACO40630 at dilution of 1:100.