

PACO40658

---

## Product Information

**Size:**

50ug

**Reactivity:**

Human, Mouse

**Source:**

Rabbit

**Isotype:**

IgG

**Applications:**

ELISA, WB, IHC, IF

**Recommended dilutions:**

ELISA:1:2000-1:10000, WB:1:500-1:5000,  
IHC:1:20-1:200, IF:1:50-1:200

**Protein Background:**

Serine palmitoyltransferase (SPT). The heterodimer formed with LCB1/SPTLC1 constitutes the catalytic core. The composition of the serine palmitoyltransferase (SPT) complex determines the substrate preference. The SPTLC1-SPTLC3-SPTSSA isozyme uses both C14-CoA and C16-CoA as substrates, while the SPTLC1-SPTLC3-SPTSSB has the ability to use a broader range of acyl-CoAs without apparent preference.

**Gene ID:**

SPTLC3

**Uniprot**

Q9NUV7

**Synonyms:**

Serine palmitoyltransferase 3 (EC 2.3.1.50) (Long chain base biosynthesis protein 2b) (LCB2b) (Long chain base biosynthesis protein 3) (LCB 3) (Serine-palmitoyl-CoA transferase 3) (SPT 3), SPTLC3, C20orf38 SPTLC2L

**Immunogen:**

Recombinant Human Serine palmitoyltransferase 3 protein (1-58AA).

**Storage:**

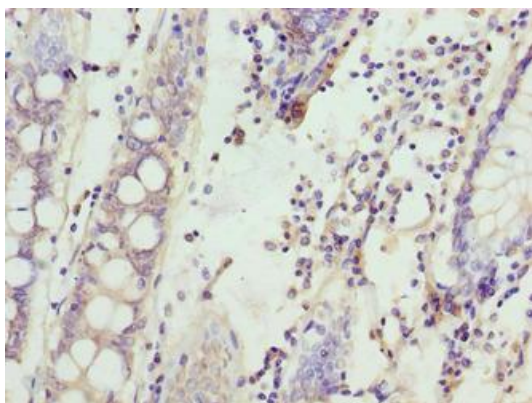
Preservative: 0.03% Proclin 300. Constituents: 50% Glycerol, 0.01M PBS, PH 7.4

## Product Images

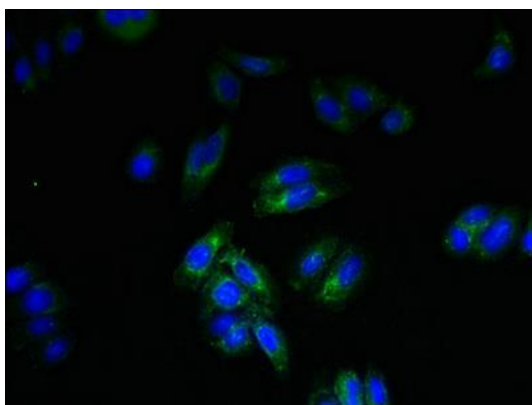
---



Western blot. All lanes: SPTLC3 antibody at 0.2 $\mu$ g/ml. Lane 1: Mouse kidney tissue. Lane 2: U87 whole cell lysate. Secondary. Goat polyclonal to rabbit IgG at 1/10000 dilution. Predicted band size: 63, 20 kDa. Observed band size: 63 kDa.



Immunohistochemistry of paraffin-embedded human colon cancer using PACO40658 at dilution of 1:100.



Immunofluorescent analysis of HepG2 cells using PACO40658 at dilution of 1:100 and Alexa Fluor 488-conjugated AffiniPure Goat Anti-Rabbit IgG(H+L).