

FYCO1 Antibody



PACO40710

Product Information

Size:

50ug

Reactivity:

Human, Mouse

Source:

Rabbit

Isotype:

IgG

Applications:

ELISA, WB, IHC

Recommended dilutions:

ELISA:1:2000-1:10000, WB:1:500-1:2000,
IHC:1:20-1:200

Protein Background:

May mediate microtubule plus end-directed vesicle transport.

Gene ID:

FYCO1

Uniprot

Q9BQS8

Synonyms:

FYVE and coiled-coil domain-containing protein 1 (Zinc finger FYVE domain-containing protein 7), FYCO1, ZFYVE7

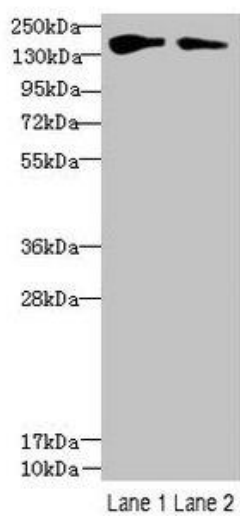
Immunogen:

Recombinant Human FYVE and coiled-coil domain-containing protein 1 protein (2-255AA).

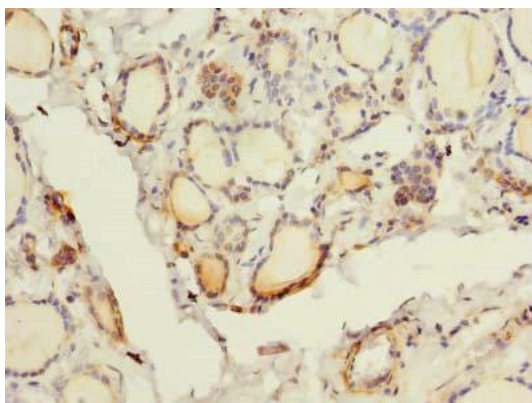
Storage:

Preservative: 0.03% Proclin 300. Constituents: 50% Glycerol, 0.01M PBS, PH 7.4

Product Images



Western blot. All lanes: FYCO1 antibody at 2.5 μ g/ml. Lane 1: HepG2 whole cell lysate. Lane 2: Mouse liver tissue. Secondary: Goat polyclonal to rabbit IgG at 1/10000 dilution. Predicted band size: 167, 44, 169 kDa. Observed band size: 167 kDa.



Immunohistochemistry of paraffin-embedded human thyroid tissue using PACO40710 at dilution of 1:100.