
Product Information

Size:

50ug

Reactivity:

Human

Source:

Rabbit

Isotype:

IgG

Applications:

ELISA, IF

Recommended dilutions:

ELISA:1:2000-1:10000, IF:1:50-1:200

Protein Background:

May be an inhibitor of SLC12A1. Seems to correspond to a subunit of a multimeric transport system and thus, additional subunits may be required for its function.

Gene ID:

SLC12A9

Uniprot

Q9BXP2

Synonyms:

Solute carrier family 12 member 9 (Cation-chloride cotransporter 6) (hCCC6) (Cation-chloride cotransporter-interacting protein 1) (CCC-interacting protein 1) (hCIP1) (Potassium-chloride transporter 9) (WO3.3), SLC12A9, CCC6 CIP1

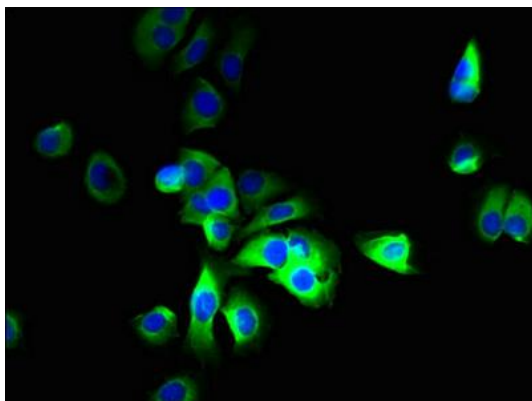
Immunogen:

Recombinant Human Solute carrier family 12 member 9 protein (126-173AA).

Storage:

Preservative: 0.03% Proclin 300. Constituents: 50% Glycerol, 0.01M PBS, PH 7.4

Product Images



Immunofluorescent analysis of MCF-7 cells using PACO40738 at dilution of 1:100 and Alexa Fluor 488-conjugated AffiniPure Goat Anti-Rabbit IgG(H+L).