

# ENKD1 Antibody



PACO40782

---

## Product Information

**Size:**

50ug

**Reactivity:**

Human, Mouse

**Source:**

Rabbit

**Isotype:**

IgG

**Applications:**

ELISA, WB, IHC

**Recommended dilutions:**

ELISA:1:2000-1:10000, WB:1:500-1:2000,  
IHC:1:20-1:200

**Protein Background:**

cytoplasmic microtubule, microtubule cytoskeleton.

**Gene ID:**

ENKD1

**Uniprot**

Q9H0I2

**Synonyms:**

Enkurin domain-containing protein 1, ENKD1, C16orf48

**Immunogen:**

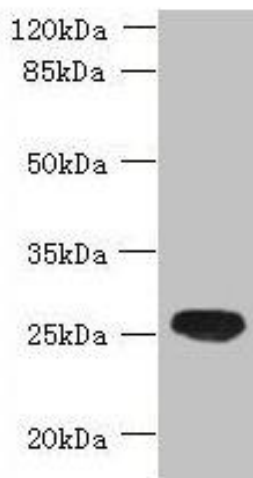
Recombinant Human Enkurin domain-containing protein 1 protein (1-346AA).

**Storage:**

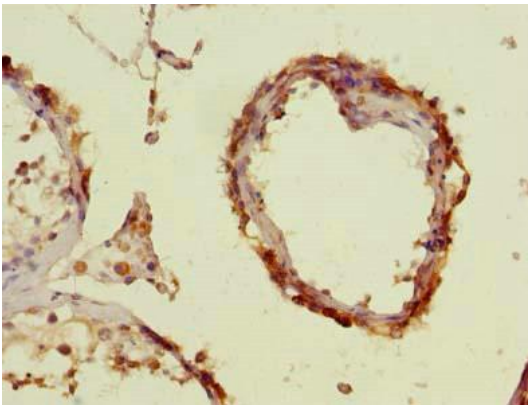
Preservative: 0.03% Proclin 300. Constituents: 50% Glycerol, 0.01M PBS, PH 7.4

## Product Images

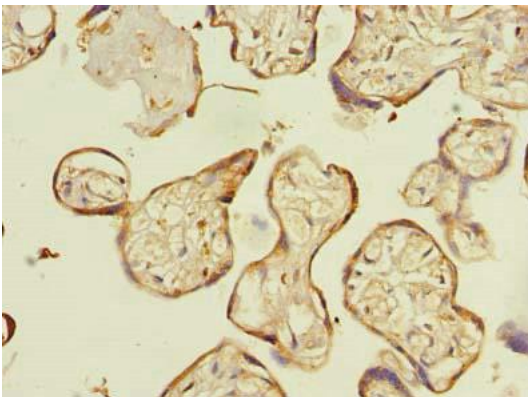
---



Western blot. All lanes: ENKD1 antibody at 7 $\mu$ g/ml + Mouse brain tissue. Secondary. Goat polyclonal to rabbit IgG at 1/10000 dilution. Predicted band size: 39, 26 kDa. Observed band size: 26 kDa.



Immunohistochemistry of paraffin-embedded human testis tissue using PACO40782 at dilution of 1:100.



Immunohistochemistry of paraffin-embedded human placenta tissue using PACO40782 at dilution of 1:100.