

SH3GLB2 Antibody



PACO40866

Product Information

Size:

50ug

Reactivity:

Human, Mouse

Source:

Rabbit

Isotype:

IgG

Applications:

ELISA, WB, IHC

Recommended dilutions:

ELISA:1:2000-1:10000, WB:1:1000-1:5000,
IHC:1:20-1:200

Protein Background:

Gene ID:

SH3GLB2

Uniprot

Q9NR46

Synonyms:

Endophilin-B2, SH3 domain-containing GRB2-like protein B2, SH3GLB2, KIAA1848, PP578

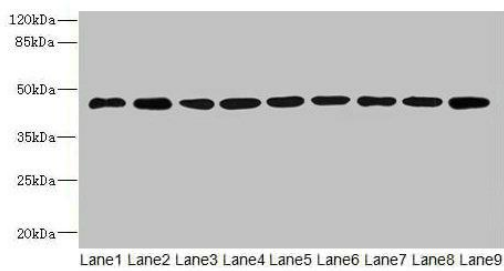
Immunogen:

Recombinant Human Endophilin-B2 protein (1-395AA).

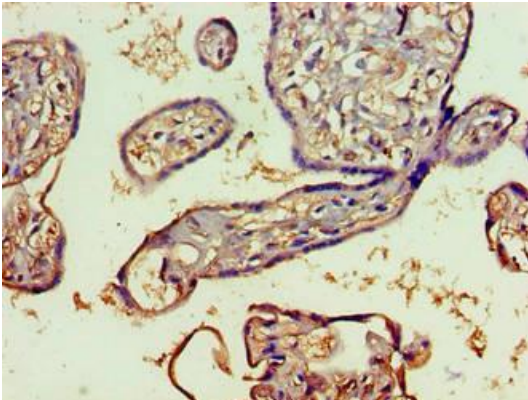
Storage:

Preservative: 0.03% Proclin 300. Constituents: 50% Glycerol, 0.01M PBS, PH 7.4

Product Images



Western blot. All lanes: SH3GLB2 antibody at 1 μ g/ml. Lane 1: HeLa whole cell lysate. Lane 2: Mouse gonadal tissue. Lane 3: Mouse lung tissue. Lane 4: U87 whole cell lysate. Lane 5: THP-1 whole cell lysate. Lane 6: A549 whole cell lysate. Lane 7: MCF-7 whole cell lysate. Lane 8: Mouse liver tissue. Lane 9: A431 whole cell lysate. Secondary. Goat polyclonal to rabbit IgG at 1/10000 dilution. Predicted band size: 44, 45 kDa. Observed band size: 44 kDa.



Immunohistochemistry of paraffin-embedded human placenta tissue using PACO40866 at dilution of 1:100.