

ARL8B Antibody



PACO40878

Product Information

Size:

50ug

Reactivity:

Human, Mouse

Source:

Rabbit

Isotype:

IgG

Applications:

ELISA, WB, IHC

Recommended dilutions:

ELISA:1:2000-1:10000, WB:1:500-1:2000,
IHC:1:20-1:200

Protein Background:

May play a role in lysosome motility. May play a role in chromosome segregation.

Gene ID:

ARL8B

Uniprot

Q9NVJ2

Synonyms:

ADP-ribosylation factor-like protein 8B (ADP-ribosylation factor-like protein 10C) (Novel small G protein indispensable for equal chromosome segregation 1), ARL8B, ARL10C
GIE1

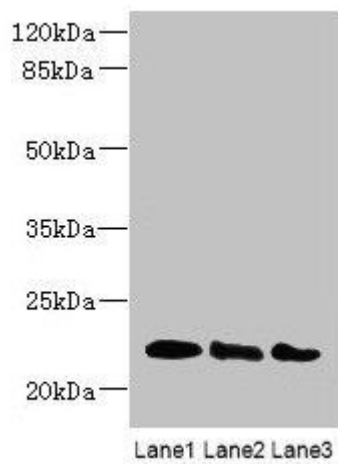
Immunogen:

Recombinant Human ADP-ribosylation factor-like protein 8B protein (20-186AA).

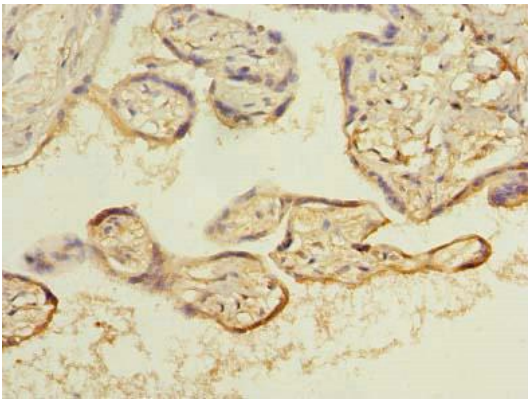
Storage:

Preservative: 0.03% Proclin 300. Constituents: 50% Glycerol, 0.01M PBS, PH 7.4

Product Images



Western blot. All lanes: ARL8B antibody at 4 μ g/ml. Lane 1: Mouse brain tissue. Lane 2: NIH/3T3 whole cell lysate. Lane 3: Jurkat whole cell lysate. Secondary: Goat polyclonal to rabbit IgG at 1/10000 dilution. Predicted band size: 22, 19 kDa. Observed band size: 22 kDa.



Immunohistochemistry of paraffin-embedded human placenta tissue using PACO40878 at dilution of 1:100.