

PACO40906

Product Information

Size:

50ug

Reactivity:

Human

Source:

Rabbit

Isotype:

IgG

Applications:

ELISA, IF

Recommended dilutions:

ELISA:1:2000-1:10000, IF:1:50-1:200

Protein Background:

Responsible for the biosynthesis of pyroglutamyl peptides.

Gene ID:

QPCTL

Uniprot

Q9NXS2

Synonyms:

Glutamyl-peptide cyclotransferase-like protein (EC 2.3.2.5) (Golgi-resident glutamyl-peptide cyclotransferase) (isoQC) (gQC), QPCTL

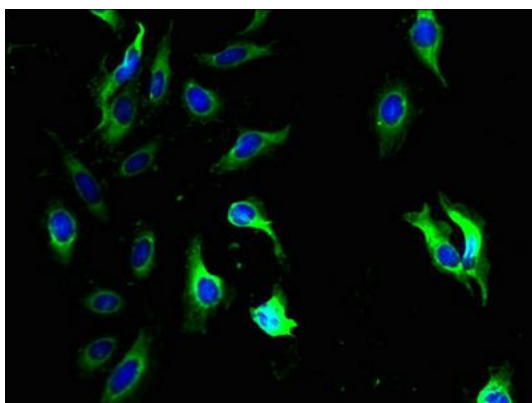
Immunogen:

Recombinant Human Glutamyl-peptide cyclotransferase-like protein (212-382AA).

Storage:

Preservative: 0.03% Proclin 300. Constituents: 50% Glycerol, 0.01M PBS, PH 7.4

Product Images



Immunofluorescent analysis of HeLa cells using PACO40906 at dilution of 1:100 and Alexa Fluor 488-conjugated AffiniPure Goat Anti-Rabbit IgG(H+L).