

# CALN1 Antibody



PACO41002

---

## Product Information

**Size:**

50ug

**Reactivity:**

Human, Mouse

**Source:**

Rabbit

**Isotype:**

IgG

**Applications:**

ELISA, WB

**Recommended dilutions:**

ELISA:1:2000-1:10000, WB:1:500-1:2000

**Protein Background:**

Negatively regulates Golgi-to-plasma membrane trafficking by interacting with PI4KB and inhibiting its activity. May play a role in the physiology of neurons and is potentially important in memory and learning.

**Gene ID:**

CALN1

**Uniprot**

Q9BXU9

**Synonyms:**

Calcium-binding protein 8 (CaBP8) (Calneuron I) (Calneuron-1), CALN1, CABP8

**Immunogen:**

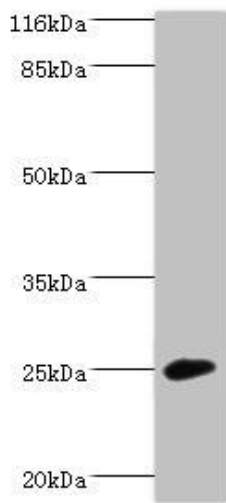
Recombinant Human Calcium-binding protein 8 protein (1-192AA).

**Storage:**

Preservative: 0.03% Proclin 300. Constituents: 50% Glycerol, 0.01M PBS, PH 7.4

## Product Images

---



Western blot. All lanes: CALN1 antibody at 2 $\mu$ g/ml + Mouse brain tissue. Secondary. Goat polyclonal to rabbit IgG at 1/10000 dilution. Predicted band size: 25, 30 kDa. Observed band size: 25 kDa.