

# SLC46A2 Antibody



PACO41006

---

## Product Information

**Size:**

50ug

**Reactivity:**

Human, Mouse

**Source:**

Rabbit

**Isotype:**

IgG

**Applications:**

ELISA, WB, IF

**Recommended dilutions:**

ELISA:1:2000-1:10000, WB:1:1000-1:5000,  
IF:1:50-1:200

**Protein Background:**

May act as a transporter.

**Gene ID:**

SLC46A2

**Uniprot**

Q9BY10

**Synonyms:**

Thymic stromal cotransporter homolog (Solute carrier family 46 member 2), SLC46A2, TSCOT

**Immunogen:**

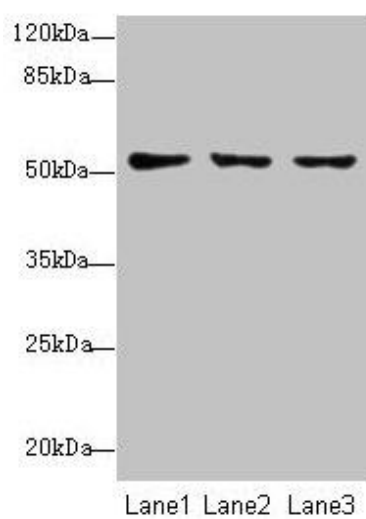
Recombinant Human Thymic stromal cotransporter homolog protein (45-78AA).

**Storage:**

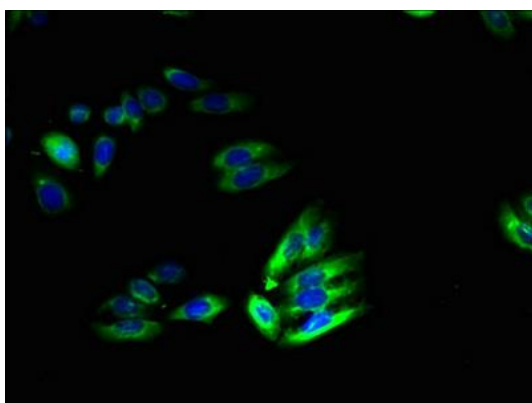
Preservative: 0.03% Proclin 300. Constituents: 50% Glycerol, 0.01M PBS, PH 7.4

## Product Images

---



Western blot. All lanes: SLC46A2 antibody at 8 $\mu$ g/ml. Lane 1: HT29 whole cell lysate. Lane 2: Mouse liver tissue. Lane 3: Mouse kidney tissue. Secondary. Goat polyclonal to rabbit IgG at 1/10000 dilution. Predicted band size: 52 kDa. Observed band size: 52 kDa.



Immunofluorescent analysis of HepG2 cells using PACO41006 at dilution of 1:100 and Alexa Fluor 488-conjugated AffiniPure Goat Anti-Rabbit IgG(H+L).