

PACO41010

Product Information

Size:

50ug

Reactivity:

Human

Source:

Rabbit

Isotype:

IgG

Applications:

ELISA, IHC

Recommended dilutions:

ELISA:1:2000-1:10000, IHC:1:20-1:200

Protein Background:

Component of the microsomal signal peptidase complex which removes signal peptides from nascent proteins as they are translocated into the lumen of the endoplasmic reticulum.

Gene ID:

SEC11C

Uniprot

Q9BY50

Synonyms:

Signal peptidase complex catalytic subunit SEC11C (EC 3.4.21.89) (Microsomal signal peptidase 21 kDa subunit) (SPase 21 kDa subunit) (SEC11 homolog C) (SEC11-like protein 3) (SPC21), SEC11C, SEC11L3 SPC21 SPCS4C

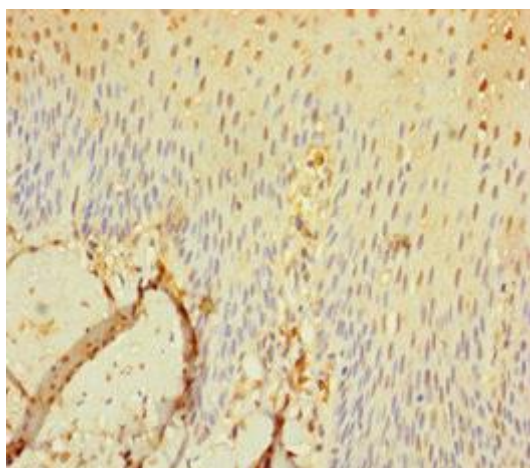
Immunogen:

Recombinant Human Signal peptidase complex catalytic subunit SEC11C protein (49-192AA).

Storage:

Preservative: 0.03% Proclin 300. Constituents: 50% Glycerol, 0.01M PBS, PH 7.4

Product Images



Immunohistochemistry of paraffin-embedded human tonsil tissue using PACO41010 at dilution of 1:100.