

PACO41050

Product Information

Size:

50ug

Reactivity:

Human

Source:

Rabbit

Isotype:

IgG

Applications:

ELISA, IHC

Recommended dilutions:

ELISA:1:2000-1:10000, IHC:1:20-1:200

Protein Background:

Plays an essential role in total transketolase activity and cell proliferation in cancer cells; after transfection with anti-TKTL1 siRNA, total transketolase activity dramatically decreases and proliferation was significantly inhibited in cancer cells. Plays a pivotal role in carcinogenesis.

Gene ID:

TKTL2

Uniprot

Q9H0I9

Synonyms:

Transketolase-like protein 2 (EC 2.2.1.1), TKTL2

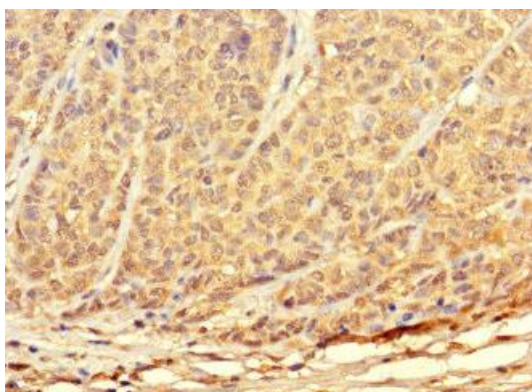
Immunogen:

Recombinant Human Transketolase-like protein 2 protein (1-300AA).

Storage:

Preservative: 0.03% Proclin 300. Constituents: 50% Glycerol, 0.01M PBS, PH 7.4

Product Images



Immunohistochemistry of paraffin-embedded human ovarian cancer using PACO41050 at dilution of 1:100.