

SLC25A32 Antibody



PACO41058

Product Information

Size:

50ug

Reactivity:

Human, Mouse

Source:

Rabbit

Isotype:

IgG

Applications:

ELISA, WB

Recommended dilutions:

ELISA:1:2000-1:10000, WB:1:500-1:5000

Protein Background:

Transports folate across the inner membranes of mitochondria.

Gene ID:

SLC25A32

Uniprot

Q9H2D1

Synonyms:

Mitochondrial folate transporter/carrier (Solute carrier family 25 member 32), SLC25A32, MFT MFTC

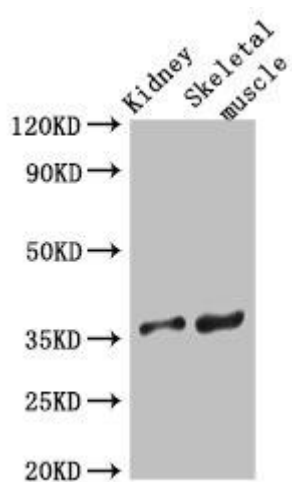
Immunogen:

Recombinant Human Mitochondrial folate transporter/carrier protein (44-88AA).

Storage:

Preservative: 0.03% Proclin 300. Constituents: 50% Glycerol, 0.01M PBS, PH 7.4

Product Images



Western Blot. Positive WB detected in: Mouse kidney tissue, Mouse skeletal muscle tissue. All lanes: SLC25A32 antibody at 3 μ g/ml. Secondary. Goat polyclonal to rabbit IgG at 1/50000 dilution. Predicted band size: 36 kDa. Observed band size: 36 kDa.