

NOL6 Antibody



PACO41090

Product Information

Size:

50ug

Reactivity:

Human

Source:

Rabbit

Isotype:

IgG

Applications:

ELISA, IHC

Recommended dilutions:

ELISA:1:2000-1:10000, IHC:1:20-1:200

Protein Background:

condensed nuclear chromosome, CUR1 complex, mitochondrion, nucleolus, nucleus, small-subunit processome, UTP-C complex, poly(A) RNA binding, rRNA processing, tRNA export from nucleus.

Gene ID:

NOL6

Uniprot

Q9H6R4

Synonyms:

Nucleolar protein 6 (Nucleolar RNA-associated protein) (Nrap), NOL6

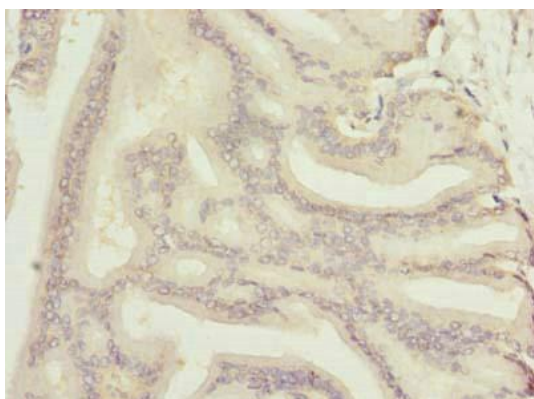
Immunogen:

Recombinant Human Nucleolar protein 6 protein (951-1146AA).

Storage:

Preservative: 0.03% Proclin 300. Constituents: 50% Glycerol, 0.01M PBS, PH 7.4

Product Images



Immunohistochemistry of paraffin-embedded human prostate cancer using PACO41090 at dilution of 1:100.