

LRRC19 Antibody



PACO41094

Product Information

Size:

50ug

Reactivity:

Human

Source:

Rabbit

Isotype:

IgG

Applications:

ELISA, IHC, IF

Recommended dilutions:

ELISA:1:2000-1:10000, IHC:1:20-1:200,
IF:1:200-1:500

Protein Background:

Gene ID:

LRRC19

Uniprot

Q9H756

Synonyms:

Leucine-rich repeat-containing protein 19, LRRC19

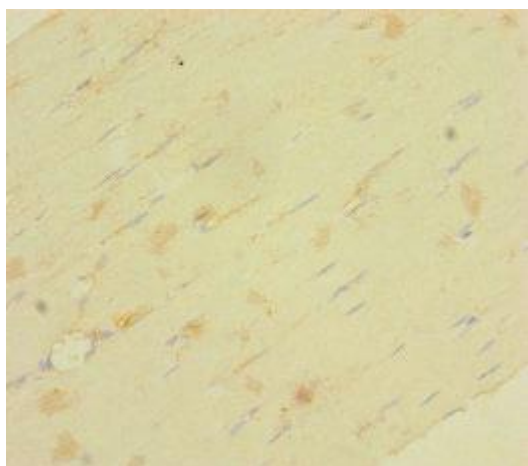
Immunogen:

Recombinant Human Leucine-rich repeat-containing protein 19 protein (25-270AA).

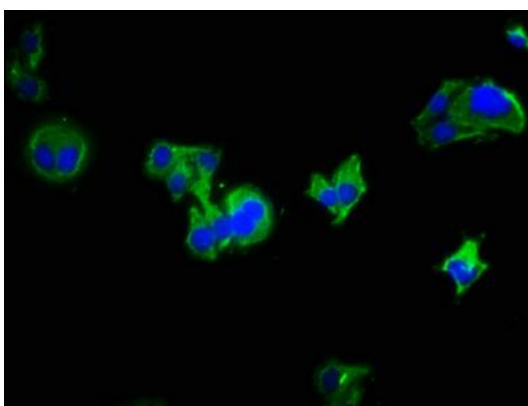
Storage:

Preservative: 0.03% Proclin 300. Constituents: 50% Glycerol, 0.01M PBS, PH 7.4

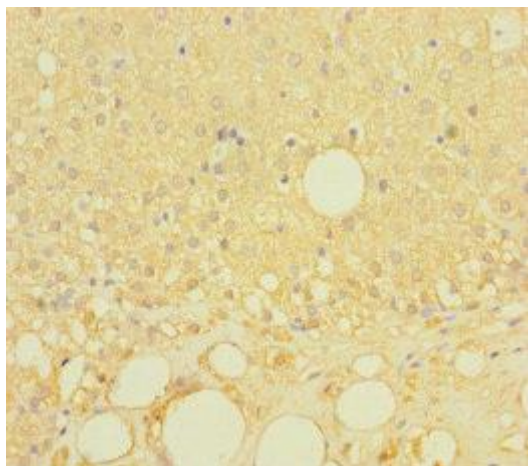
Product Images



Immunohistochemistry of paraffin-embedded human skeletal muscle tissue using PACO41094 at dilution of 1:100.



Immunofluorescence staining of HepG2 cells with PACO41094 at 1:333, counter-stained with DAPI. The cells were fixed in 4% formaldehyde, permeabilized using 0.2% Triton X-100 and blocked in 10% normal Goat Serum. The cells were then incubated with the antibody overnight at 4°C. The secondary antibody was Alexa Fluor 488-conjugated AffiniPure Goat Anti-Rabbit IgG(H+L).



Immunohistochemistry of paraffin-embedded human adrenal gland tissue using PACO41094 at dilution of 1:100.