
Product Information

Size:

50ug

Reactivity:

Human

Source:

Rabbit

Isotype:

IgG

Applications:

ELISA, WB, IHC, IF, IP

Recommended dilutions:

ELISA:1:2000-1:10000, WB:1:2000-1:5000,
IHC:1:100-1:1000, IF:1:200-1:500, IP1:200-
1:2000,

Protein Background:

Activator of LATS1/2 in the Hippo signaling pathway which plays a pivotal role in organ size control and tumor suppression by restricting proliferation and promoting apoptosis. The core of this pathway is composed of a kinase cascade wherein STK3/MST2 and STK4/MST1, in complex with its regulatory protein SAV1, phosphorylates and activates LATS1/2 in complex with its regulatory protein MOB1, which in turn phosphorylates and inactivates YAP1 oncoprotein and WWTR1/TAZ. Phosphorylation of YAP1 by LATS1/2 inhibits its translocation into the nucleus to regulate cellular genes important for cell proliferation, cell death, and cell migration. Stimulates the kinase activity of STK38 and STK38L. Acts cooperatively with STK3/MST2 to activate STK38.

Gene ID:

MOB1A

Uniprot

Q9H8S9

Synonyms:

MOB kinase activator 1A (Mob1 alpha) (Mob1A) (Mob1 homolog 1B) (Mps one binder kinase activator-like 1B), MOB1A, C2orf6 MOB4B MOBK1B MOBKL1B

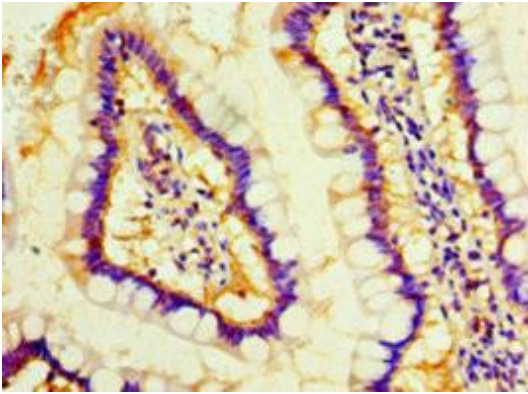
Immunogen:

Recombinant Human MOB kinase activator 1A protein (2-216AA).

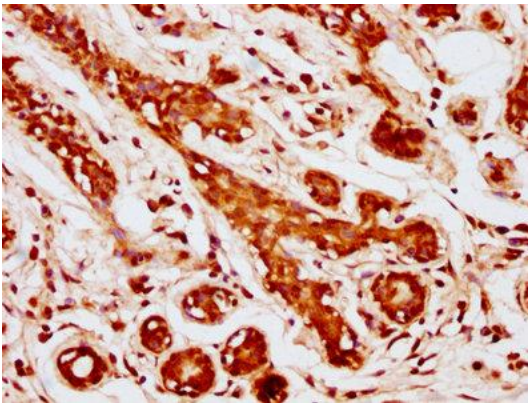
Storage:

Preservative: 0.03% Proclin 300. Constituents: 50% Glycerol, 0.01M PBS, PH 7.4

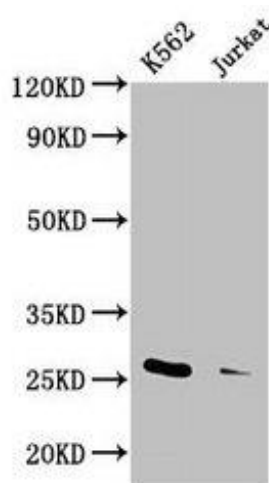
Product Images



Immunohistochemistry of paraffin-embedded human small intestine tissue using PACO41102 at dilution of 1:100.



IHC image of PACO41102 diluted at 1:1000 and staining in paraffin-embedded human breast cancer performed on a Leica BondTM system. After dewaxing and hydration, antigen retrieval was mediated by high pressure in a citrate buffer (pH 6.0). Section was blocked with 10% normal goat serum 30min at RT. Then primary antibody (1% BSA) was incubated at 4°C overnight. The primary is detected by a biotinylated secondary antibody and visualized using an HRP conjugated SP system.



Western Blot. Positive WB detected in: K562 whole cell lysate, Jurkat whole cell lysate. All lanes: MOB1A antibody at 3.3µg/ml. Secondary. Goat polyclonal to rabbit IgG at 1/50000 dilution. Predicted band size: 26, 17 kDa. Observed band size: 26 kDa.