

MTHFD2L Antibody



PACO41106

Product Information

Size:

50ug

Reactivity:

Human, Mouse

Source:

Rabbit

Isotype:

IgG

Applications:

ELISA, WB

Recommended dilutions:

ELISA:1:2000-1:10000, WB:1:500-1:2000

Protein Background:

mitochondrion, methenyltetrahydrofolate cyclohydrolase activity, methylenetetrahydrofolate dehydrogenase (NAD⁺) activity, methylenetetrahydrofolate dehydrogenase (NADP⁺) activity, one-carbon metabolic process.

Gene ID:

MTHFD2L

Uniprot

Q9H903

Synonyms:

Probable bifunctional methylenetetrahydrofolate dehydrogenase/cyclohydrolase 2 (NADP-dependent methylenetetrahydrofolate dehydrogenase 2-like protein) (MTHFD2-like) [Includes: NAD-dependent methylenetetrahydrofolate dehydrogenase (EC 1.5.1.15); Methenyltetrahydrofolate cyclohydrolase (EC 3.5.4.9)], MTHFD2L

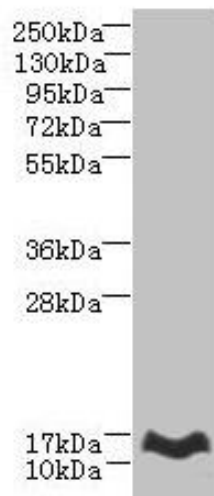
Immunogen:

Recombinant Human Probable bifunctional methylenetetrahydrofolate dehydrogenase/cyclohydrolase 2 protein (136-268AA).

Storage:

Preservative: 0.03% Proclin 300. Constituents: 50% Glycerol, 0.01M PBS, PH 7.4

Product Images



Western blot. All lanes: MTHFD2L antibody at 6 μ g/ml + Mouse lung tissue. Secondary. Goat polyclonal to rabbit IgG at 1/10000 dilution. Predicted band size: 38, 32, 8, 25, 33 kDa. Observed band size: 14 kDa.