

# RAVER2 Antibody



PACO41138

---

## Product Information

**Size:**

50ug

**Reactivity:**

Human

**Source:**

Rabbit

**Isotype:**

IgG

**Applications:**

ELISA, WB, IHC, IF

**Recommended dilutions:**

ELISA:1:2000-1:10000, WB:1:500-1:5000,  
IHC:1:20-1:200, IF:1:50-1:200

**Protein Background:**

May bind single-stranded nucleic acid, .

**Gene ID:**

RAVER2

**Uniprot**

Q9HCJ3

**Synonyms:**

Ribonucleoprotein PTB-binding 2 (Protein raver-2), RAVR2, KIAA1579

**Immunogen:**

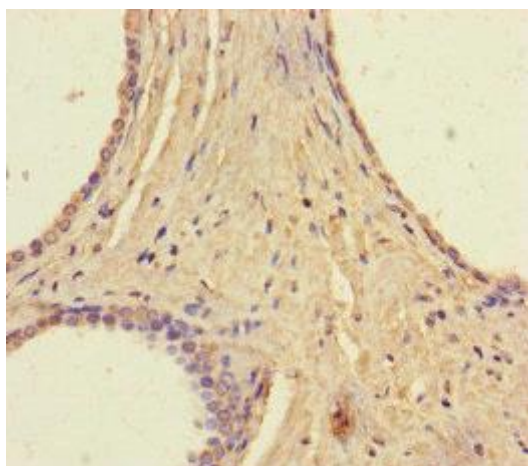
Recombinant Human Ribonucleoprotein PTB-binding 2 protein (2-691AA).

**Storage:**

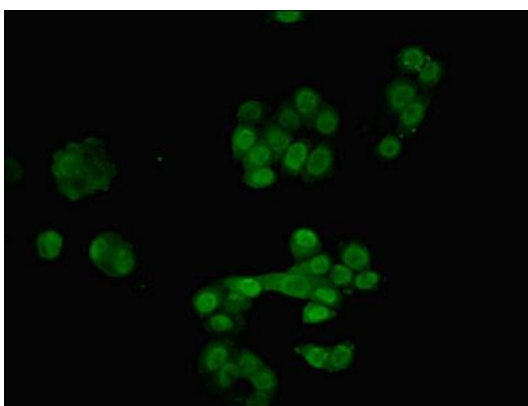
Preservative: 0.03% Proclin 300. Constituents: 50% Glycerol, 0.01M PBS, PH 7.4

## Product Images

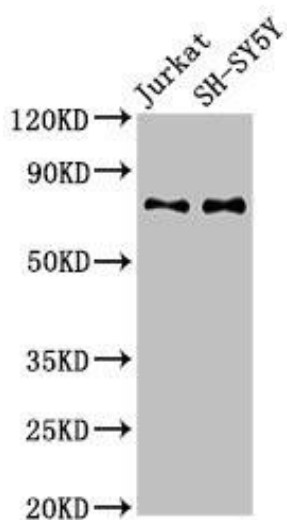
---



Immunohistochemistry of paraffin-embedded human prostate cancer using PACO41138 at dilution of 1:100.



Immunofluorescent analysis of PC-3 cells using PACO41138 at dilution of 1:100 and Alexa Fluor 488-conjugated AffiniPure Goat Anti-Rabbit IgG(H+L).



Western Blot. Positive WB detected in: Jurkat whole cell lysate, SH-SY5Y whole cell lysate. All lanes: RAVER2 antibody at 3µg/ml. Secondary. Goat polyclonal to rabbit IgG at 1/50000 dilution. Predicted band size: 75, 73 kDa. Observed band size: 75 kDa.