

# FAM105A Antibody



PACO41178

---

## Product Information

**Size:**

50ug

**Reactivity:**

Human

**Source:**

Rabbit

**Isotype:**

IgG

**Applications:**

ELISA, WB, IHC

**Recommended dilutions:**

ELISA:1:2000-1:10000, WB:1:500-1:2000,  
IHC:1:20-1:200

**Protein Background:**

**Gene ID:**

FAM105A

**Uniprot**

Q9NUU6

**Synonyms:**

Inactive ubiquitin thioesterase FAM105A, FAM105A

**Immunogen:**

Recombinant Human Inactive ubiquitin thioesterase FAM105A protein (81-356AA).

**Storage:**

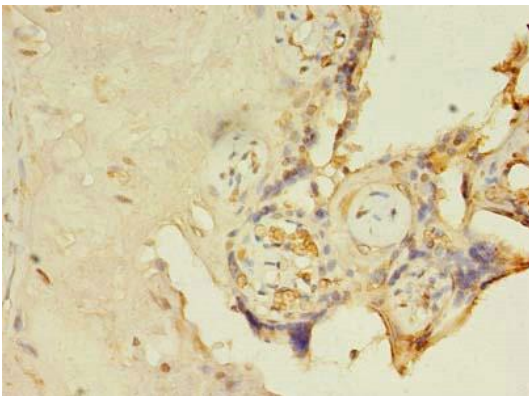
Preservative: 0.03% Proclin 300. Constituents: 50% Glycerol, 0.01M PBS, PH 7.4

## Product Images

---



Western blot. All lanes: FAM105A antibody at 8 $\mu$ g/ml + K562 whole cell lysate. Secondary. Goat polyclonal to rabbit IgG at 1/10000 dilution. Predicted band size: 43 kDa. Observed band size: 43 kDa.



Immunohistochemistry of paraffin-embedded human placenta tissue using PACO41178 at dilution of 1:100.